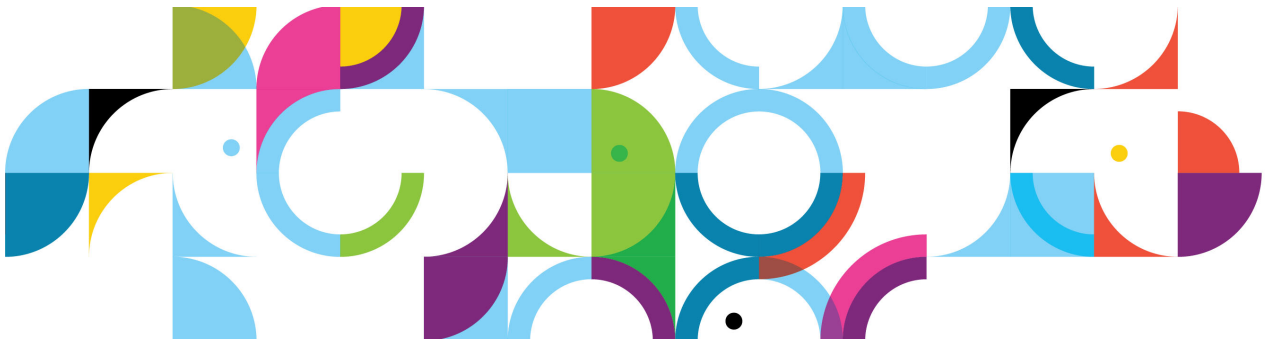




*IBM Connections 4.5
Deployment Scenarios*

Deployment Scenarios

ERC 1.0



Trademarks

IBM, the IBM logo, and ibm.com are trademarks or registered trademarks of International Business Machines Corp., registered in many jurisdictions worldwide.

The following are trademarks of International Business Machines Corporation, registered in many jurisdictions worldwide:

Cognos®	DB2 Universal Database™	DB2®
Domino®	FileNet®	Lotus Notes®
Lotus®	Notes®	Rational®
Tivoli®	WebSphere®	

Linux is a registered trademark of Linus Torvalds in the United States, other countries, or both.

Microsoft and Windows are trademarks of Microsoft Corporation in the United States, other countries, or both.

Java™ and all Java-based trademarks and logos are trademarks or registered trademarks of Oracle and/or its affiliates.

Other product and service names might be trademarks of IBM or other companies.

June 2013 edition

The information contained in this document has not been submitted to any formal IBM test and is distributed on an “as is” basis without any warranty either express or implied. The use of this information or the implementation of any of these techniques is a customer responsibility and depends on the customer’s ability to evaluate and integrate them into the customer’s operational environment. While each item may have been reviewed by IBM for accuracy in a specific situation, there is no guarantee that the same or similar results will result elsewhere. Customers attempting to adapt these techniques to their own environments do so at their own risk.

© Copyright International Business Machines Corporation 2013.

This document may not be reproduced in whole or in part without the prior written permission of IBM.

US Government Users Restricted Rights - Use, duplication or disclosure restricted by GSA ADP Schedule Contract with IBM Corp.

IBM Connections Migration Guide: 4.0.x to 4.5

About the author



George Kyriacou joined the IBM Software Lab in Dublin, Ireland, in 2008 after completing an MSc in Computer Science from Trinity College. He currently works as a Senior Reliability Test Engineer for the IBM Connections Test team. He previously worked for the IBM Lotus Domino System Test team where he developed tools to improve the testing of Lotus Notes and Lotus Domino. You can reach him at George_Kyriacou@ie.ibm.com.

Contents

1. Preparing the environment for the Connections installation
2. Installing and configuring the HTTP Server and WebSphere plug-ins
3. Configuring the HTTP Server for SSL
4. Database migration
5. Installing IBM Connections

Preparing the environment for the Connections installation

Introduction

Installing the WebSphere Deployment Manager with federated AppServer node

1. Copy the WebSphere Network Deployment installation media and the WebSphere supplements installation media to the deployment manager server and extract the files.
2. Start the IBM Installation Manager and from the main menu open **Files > Preferences**.
3. In the Preferences window, select **Repositories**.

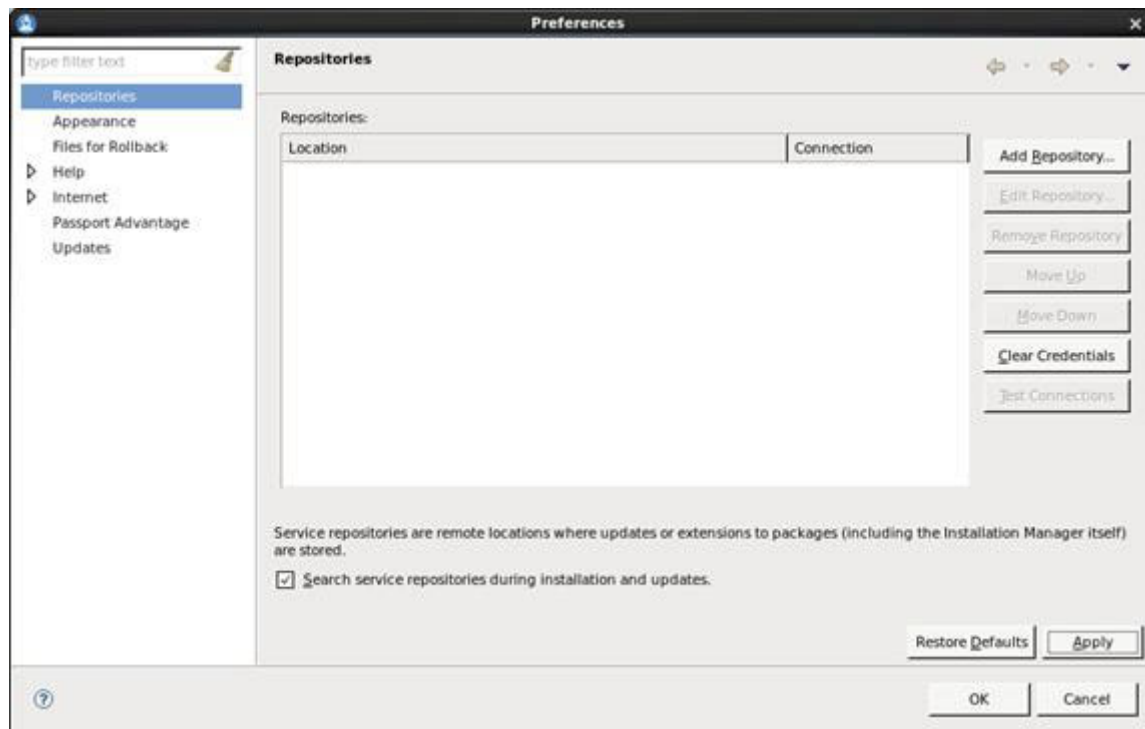


Figure 1. IBM Installation Manager - Preferences

- ___ 4. Click **Add Repository**, and in the Add Repository dialog, browse to the `repository.config` file under the location where you extracted the installation media for the WebSphere Application Server Network Deployment, and click **OK** to add it.

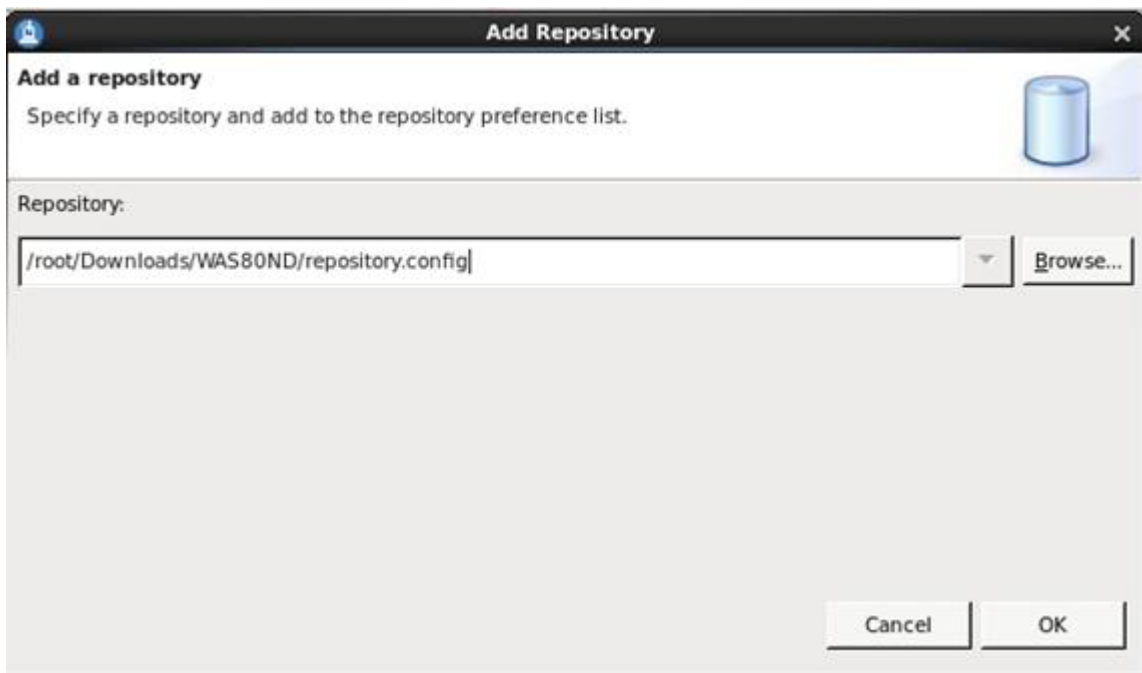


Figure 2. IBM Installation Manager - Add Repository

- ___ 5. Click **Apply** to save the changes and **OK** to return to the main Installation Manager window.



Figure 3. IBM Installation Manager - Main window

- ___ 6. On the main Installation Manager window, click the **Install** icon.

7. On the Install Packages window, select the **IBM WebSphere Application Server Network Deployment package** and click **Next** to continue.

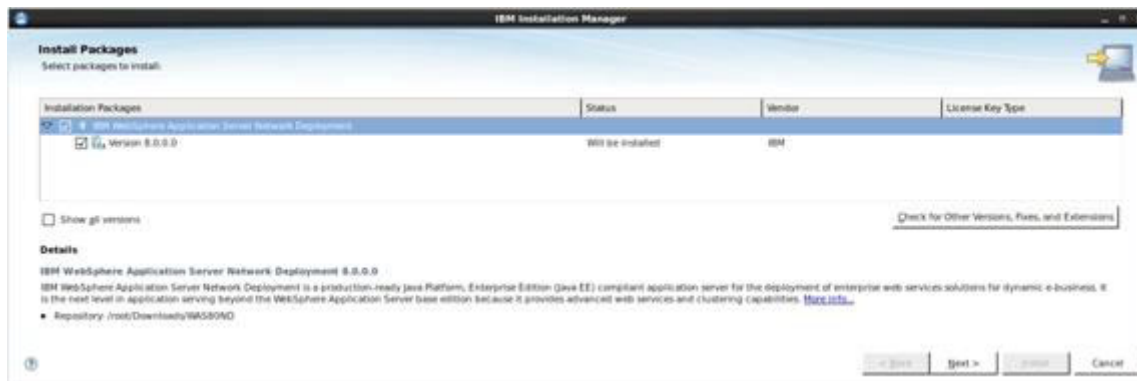


Figure 4. IBM Installation Manager - Install Packages

8. On the License agreement page, review the licenses. Select **I accept the terms in the license agreement** if you would like to proceed with the installation, and click **Next** to continue.

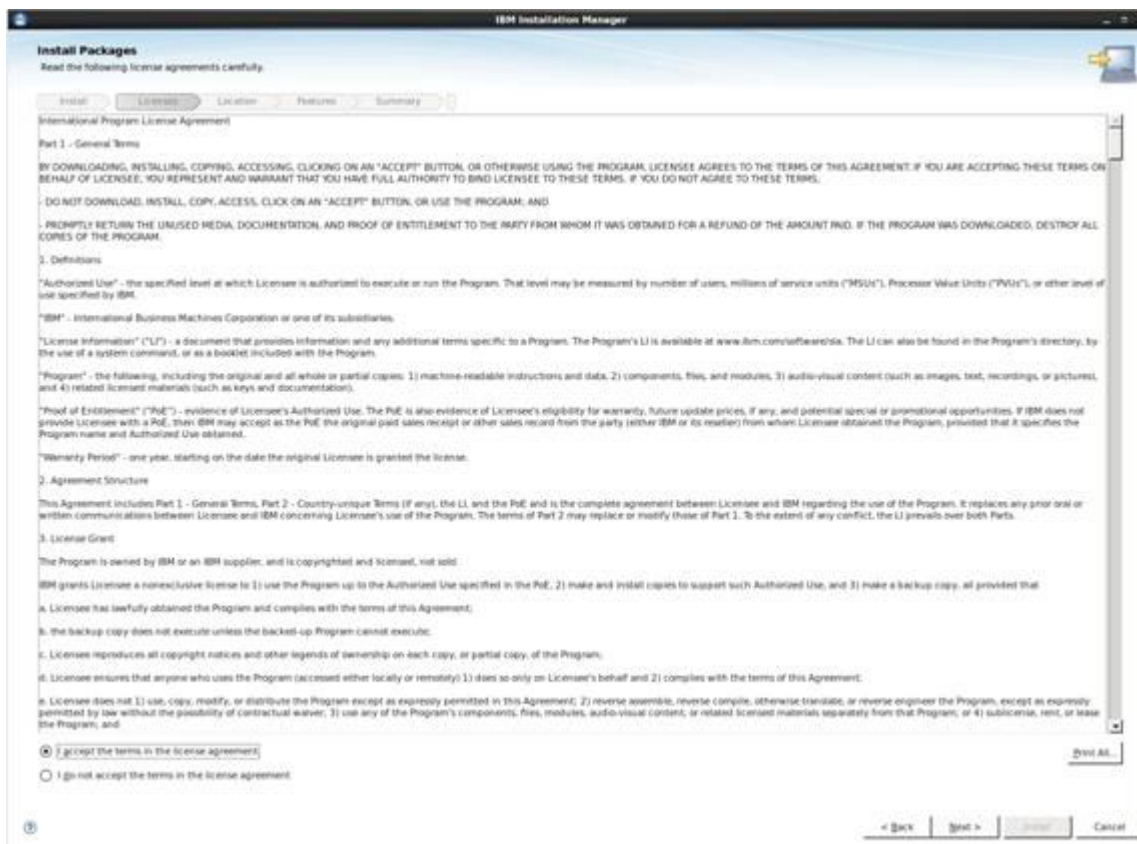


Figure 5. IBM Installation Manager - License agreement screen

- ___ 9. On the Shared Resources Directory page, use the default value or set a different path for the directory to use for the shared resources, and click **Next** to continue.



Figure 6. IBM Installation Manager - Shared Resources Directory page

- ___ 10. On the Package Group options page, use the default value or set a different path for the directory to use for the WebSphere installation.



Figure 7. IBM Installation Manager - Package Group options page

- ___ 11. On the languages selection page, select any other translations that you would like to install and click **Next** to continue.



Figure 8. IBM Installation Manager - Languages selection page

- ___ 12. On the Packages Selection page, verify the packages to install and click **Next** to continue.

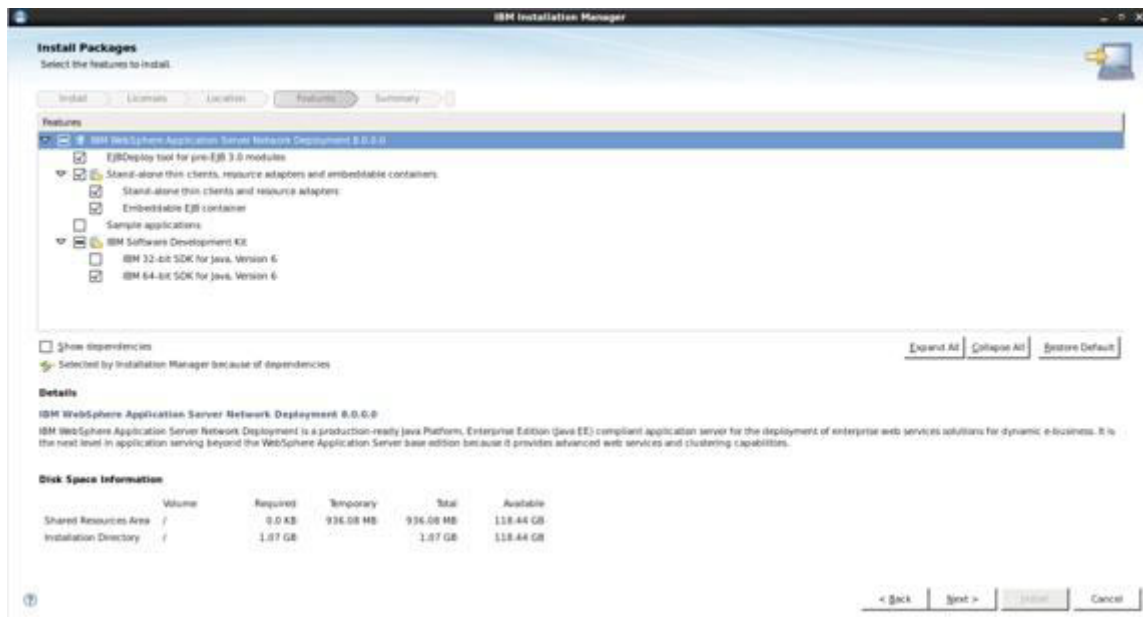


Figure 9. IBM Installation Manager - Install Packages

- ___ 13. On the Packages Summary page, verify the correctness of the packages to install and click **Install** to continue.

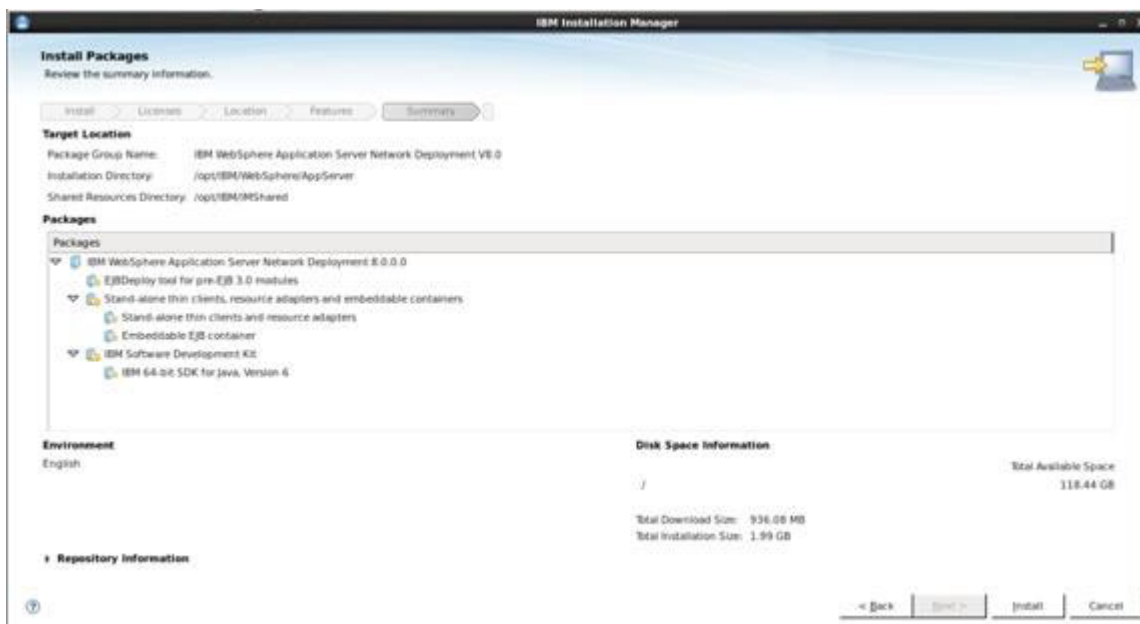


Figure 10. IBM Installation Manager - Packages Summary page

- ___ 14. On the Installation Summary page in the "Which program do you want to start?" section, leave the option to its default setting of "Profile Management Tool to create a profile" and click **Finish**.

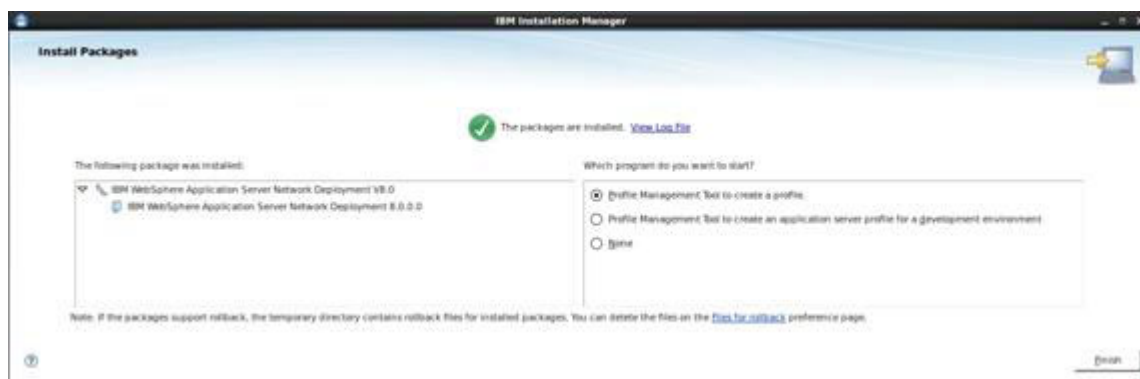


Figure 11. IBM Installation Manager - Installation Summary page

The WebSphere Customization Toolbox 8.0 application should now start.

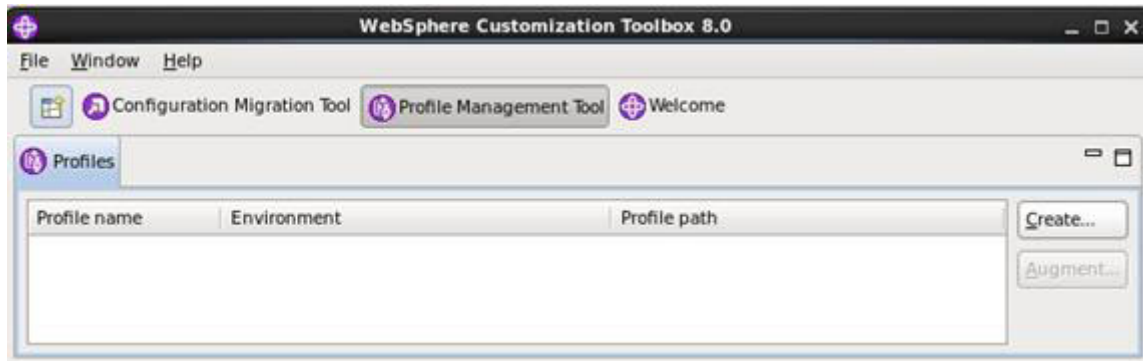


Figure 12. WebSphere Customization Toolbox 8.0

- ___ 15. In the Profiles section of the WebSphere Customization Toolbox, click **Create**, and in the Environment Selection page, pick **Cell (deployment manager and a federated application server)**. Then, click **Next**.

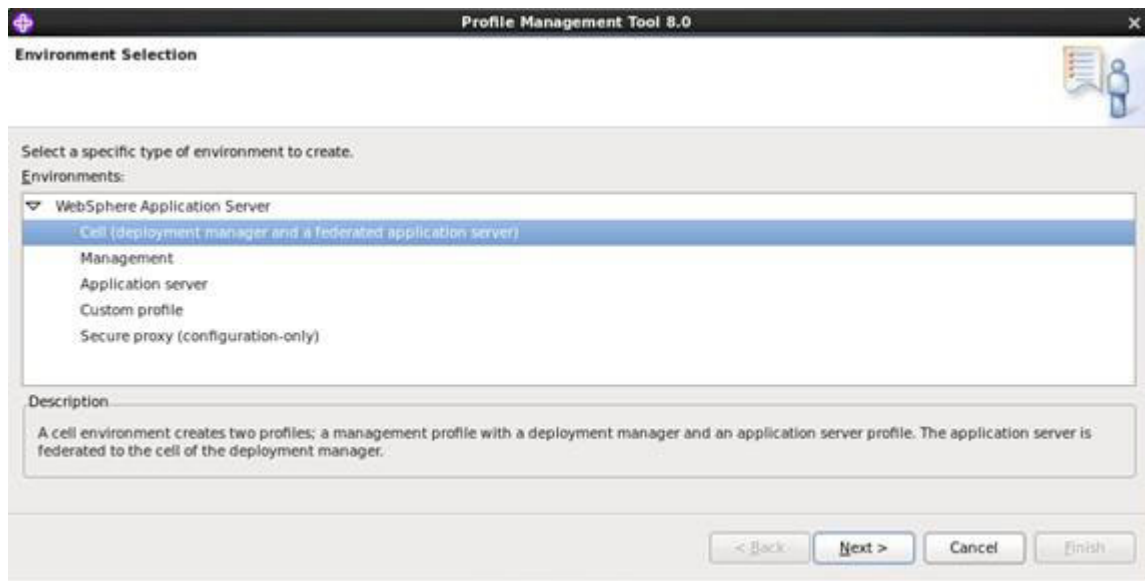


Figure 13. Profile Management Tool 8.0 - Environment selection

- ___ 16. On the Profiles Creation Options page, select the **Typical profile creation** option and then click **Next**.

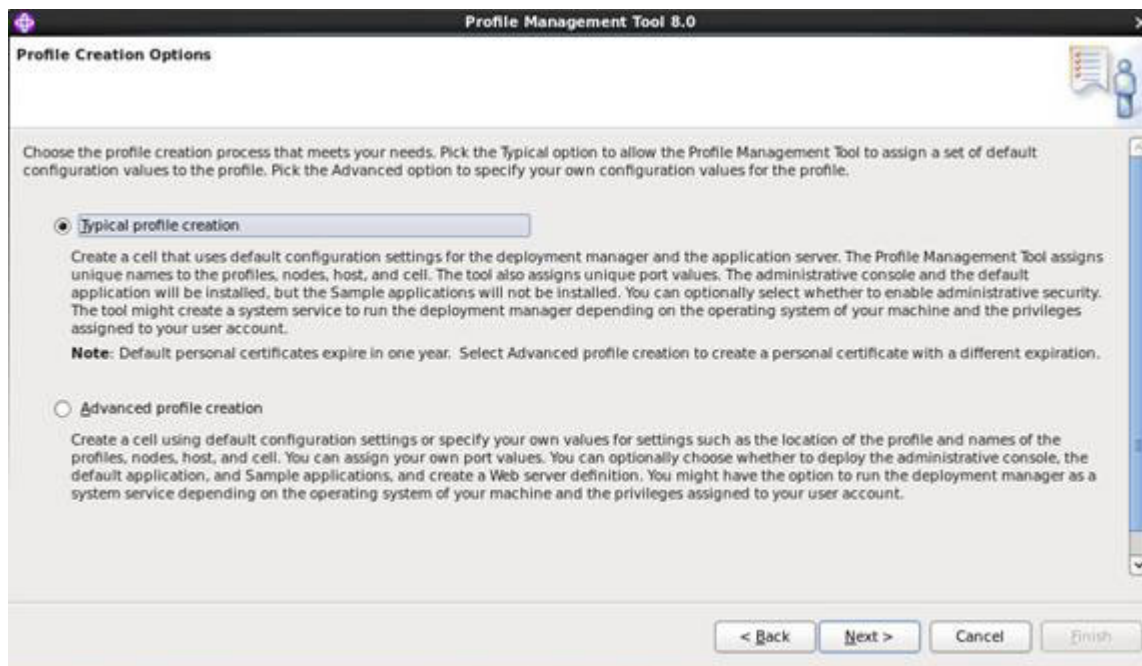


Figure 14. Profile Management Tool 8.0 - Profile Creation Options

- ___ 17. On the Administrative Security page, make sure that the Enable administrative security option is selected. Complete the user name and the two password fields and click **Next** to continue.

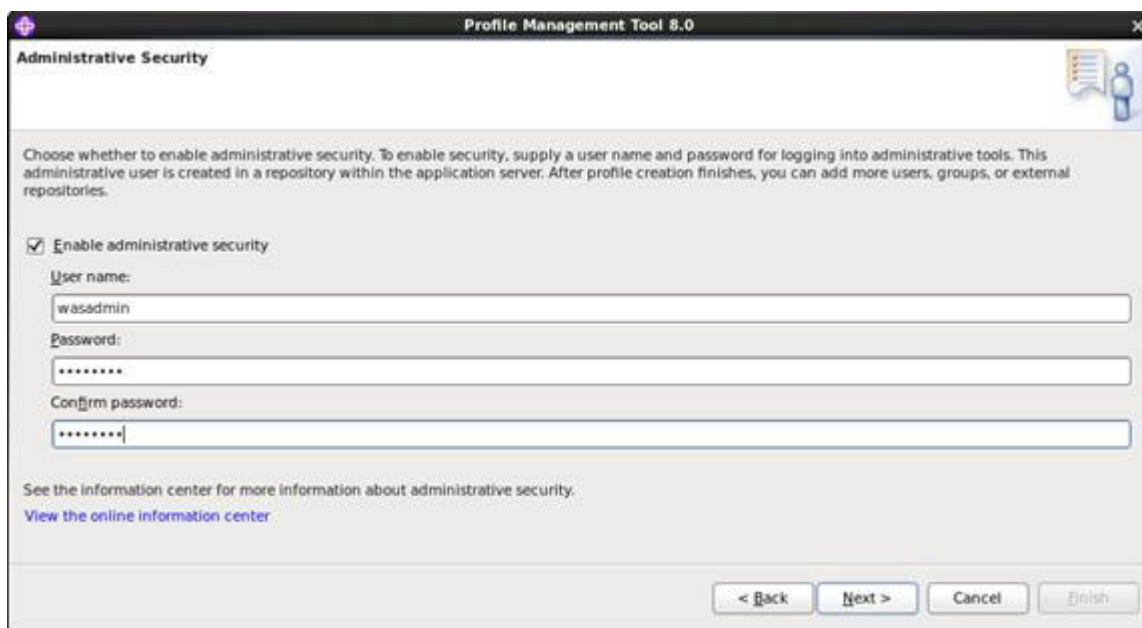


Figure 15. Profile Management Tool 8.0 - Administrative Security

- ___ 18. On the Profile Creation Summary page, review the information and click **Create** to complete the profile creation.

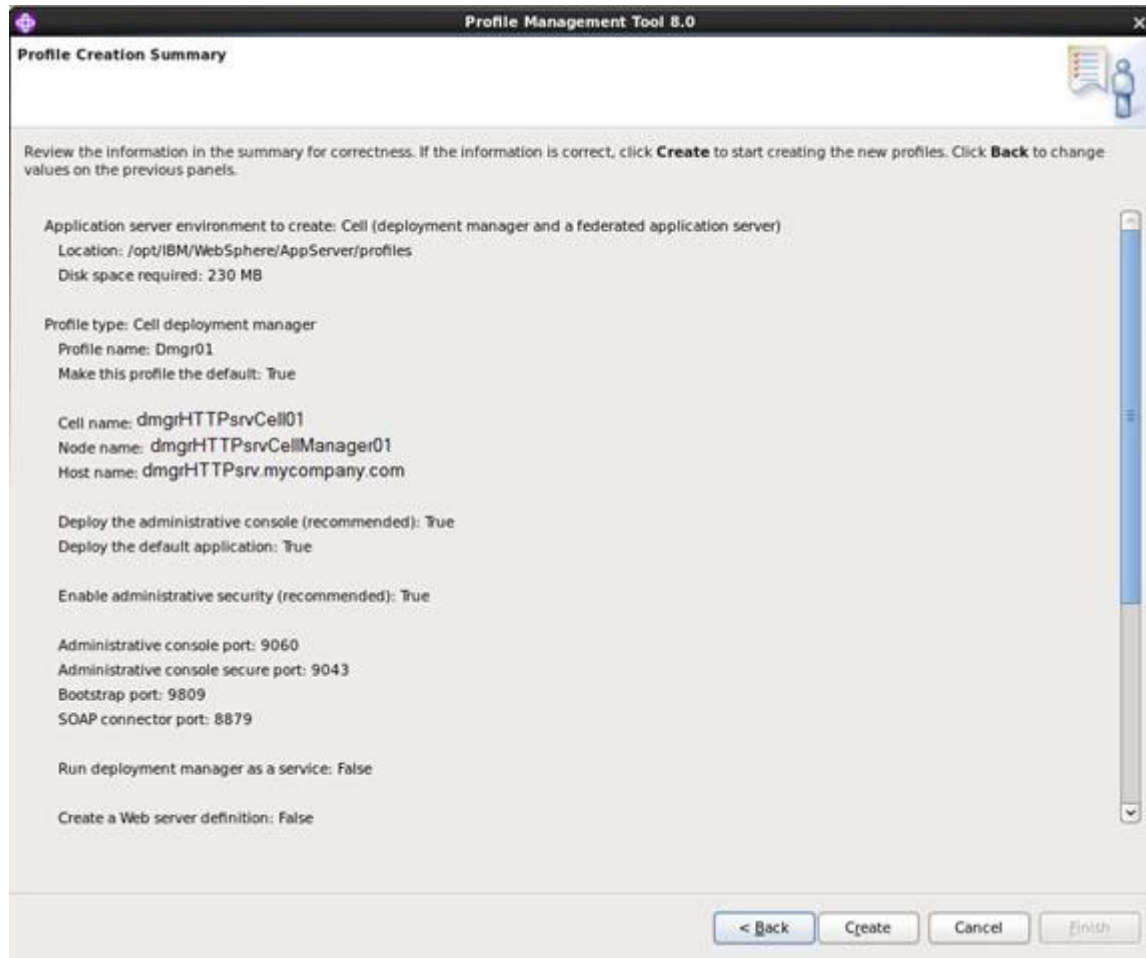


Figure 16. Profile Management Tool 8.0 - Profile Creation Summary

19. The Profile Management Tool wizard starts the process of creating the profiles and reports when it completes. On the Profile Creation Complete page, clear **Launch the First steps console** and click **Finish**.

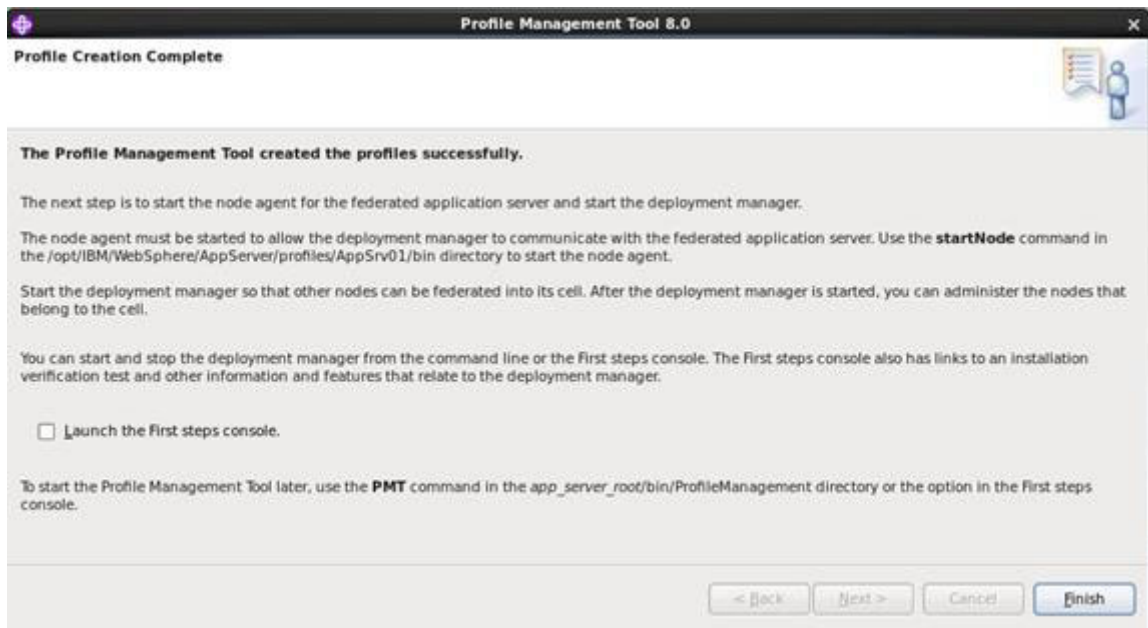


Figure 17. Profile Management Tool 8.0 - Profile Creation Complete

The Profiles section of the WebSphere Customization Tool should now list two profiles: a Cell application server and a Cell deployment manager.

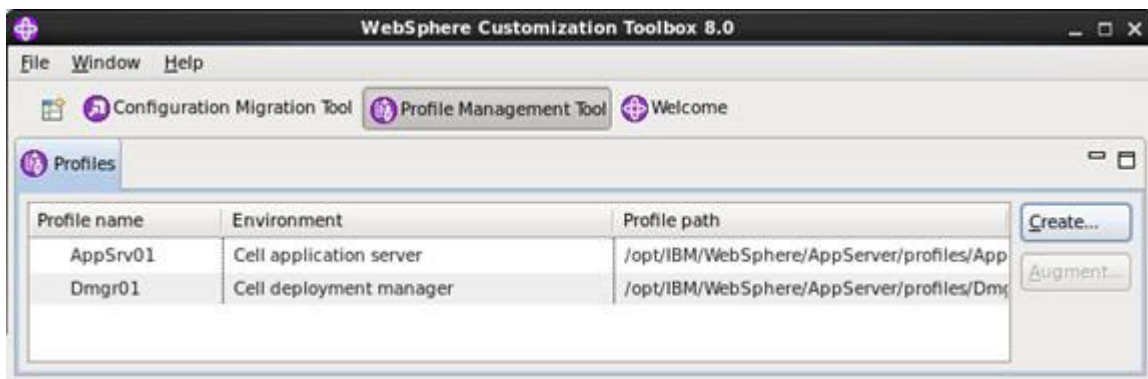


Figure 18. WebSphere Customization Toolbox 8.0 showing two profiles

Installing and federating a WebSphere AppServer node

- ___ 1. To install the second AppServer node follow steps 1 - 19 from the section, Installing the WebSphere Deployment Manager with federated AppServer node.
- ___ 2. In the Profiles section of the WebSphere Customization Toolbox, click **Create** and in the Environment Selection page pick **Application server** and click **Next**.

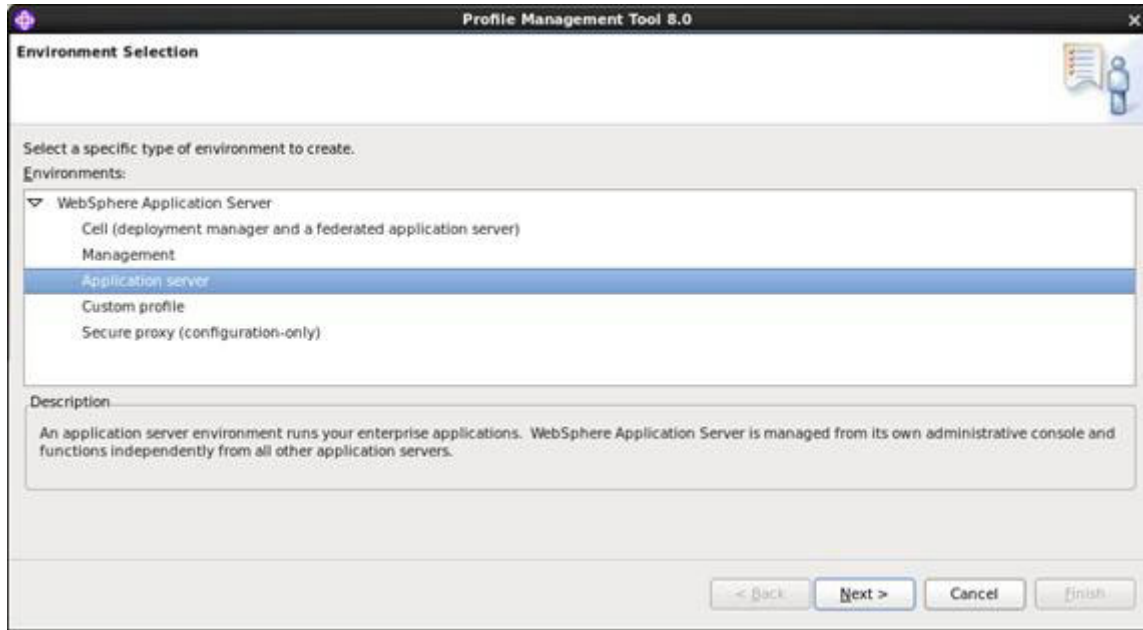


Figure 19. Profile Management Tool 8.0 - Environment Selection

3. On the Profiles Creation Options page, select the **Typical profile creation** option and then click **Next**.

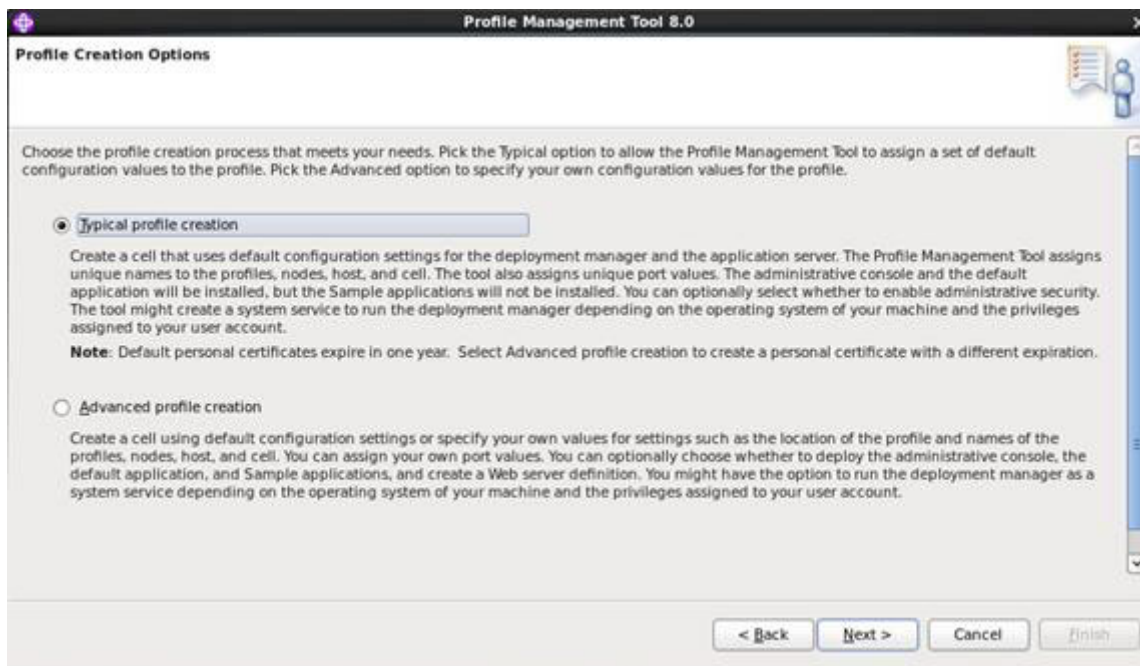


Figure 20. Profile Management Tool 8.0 - Profile Creation Option

4. On the Administrative Security page, make sure that the Enable administrative security option is selected. Complete the user name and the two password fields and click **Next** to continue.

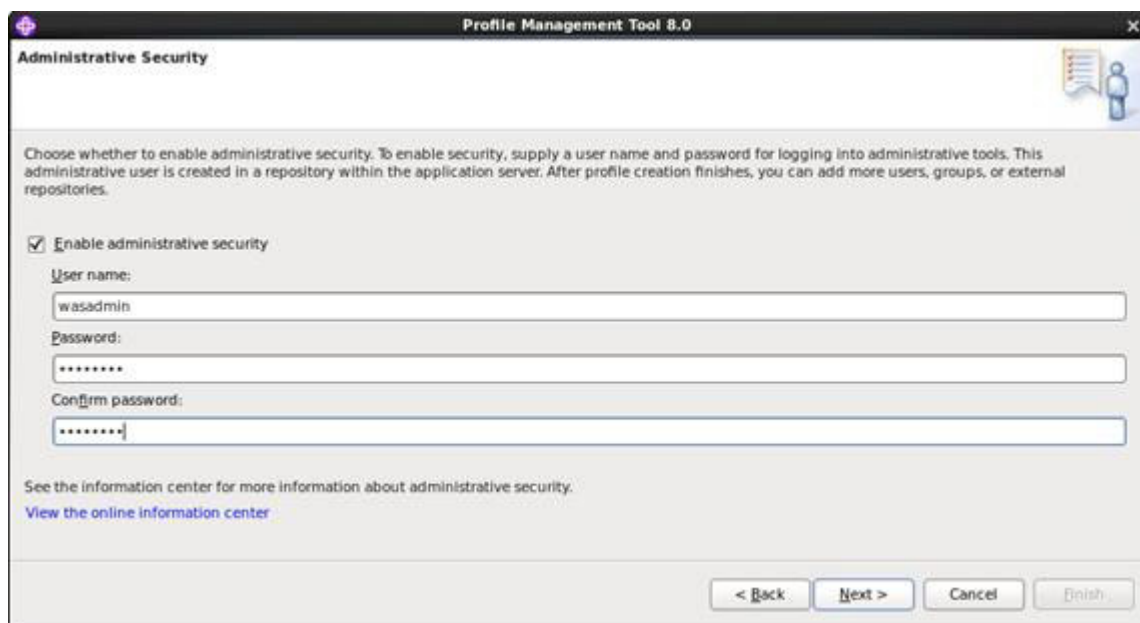


Figure 21. Profile Management Tool 8.0 - Administration Security

- ___ 5. On the Profile Creation Summary page, review the information and click **Create** to complete the profile creation.

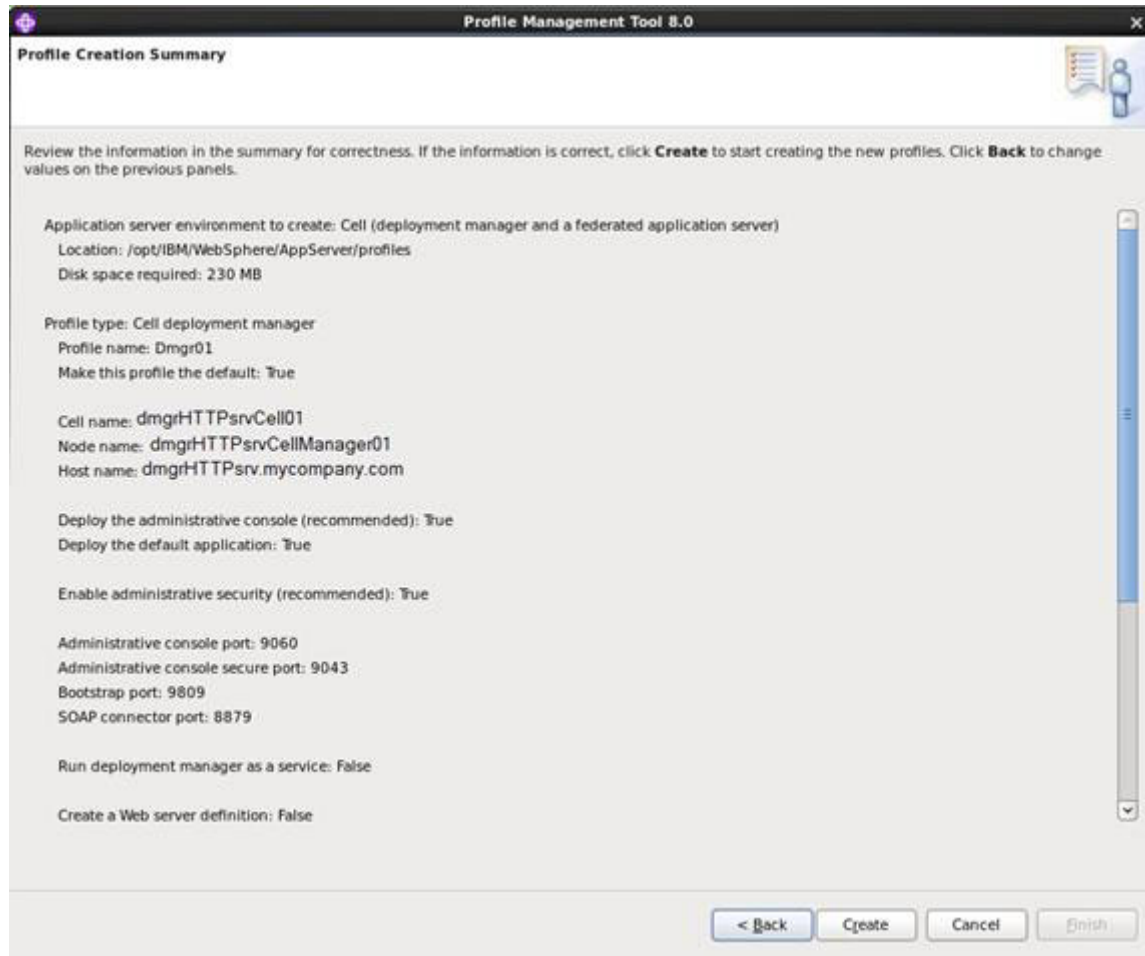


Figure 22. Profile Management Tool 8.0 - Profile Creation Summary

- ___ 6. The Profile Management Tool wizard starts the process of creating the profiles and reports when it completes. On the Profile Creation Complete page, clear **Launch the First steps console** and click **Finish**.

- ___ 7. The Profiles section of the WebSphere Customization Tool should now list a single application server profile.

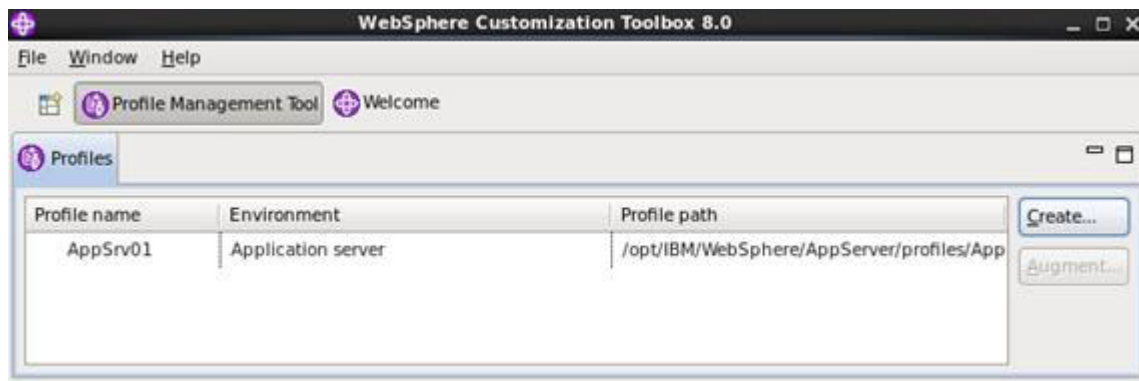


Figure 23. WebSphere Customization Toolbox 8.0 showing a single application server profile

- ___ 8. To federate the Application Server Node to the deployment manager, start the Deployment Manager server but not the Application Server on the second Node.
- ___ 9. On the Application Server Node open a command prompt and change the working directory to `/opt/IBM/WebSphere/AppServer/bin`.
- ___ 10. Within this directory run the following command:

```
./addNode.sh <dm_hostname> 8879 -user <dm_admin_username> -password
<dm_admin_username> -localusername <as_admin_username> -localpassword
<as_admin_password>
```

Where:

- `<dm_hostname>` is the fully qualified domain name of the Deployment Manager.
- `<dm_admin_username>` is the user name of the Deployment Manager Administrator.
- `<dm_admin_password>` is the password of the Deployment Manager Administrator.
- `<as_admin_username>` is the user name of the Application Server Administrator.
- `<as_admin_password>` is the password of the Application Server Administrator.

If the Application Server is federated to the Deployment Manager correctly, the output should look like the following image:

```

root@dmgrHTTPsrv:/opt/IBM/WebSphere/AppServer/bin
File Edit View Search Terminal Help
[root@pvt0dub120 bin]# ./addNode.sh dmgrHTTPsrv.mycompany.com wasadmin
-password ***** -localusername wasadmin -localpassword *****
ADMU0116I: Tool information is being logged in file
/opt/IBM/WebSphere/AppServer/profiles/AppSrv01/logs/addNode.log
ADMU0128I: Starting tool with the AppSrv01 profile
CWPKI0308I: Adding signer alias "CN= dmgrHTTPsrv.mycompany.com, OU" to local
keystore "ClientDefaultTrustStore" with the following SHA digest:
CE:B2:BD:2C:A8:B9:C4:D8:40:41:DC:FE:3E:17:1E:2F:A1:74:6F:84
CWPKI0309I: All signers from remote keystore already exist in local keystore.
ADMU0001I: Begin federation of node mysrVNODE01 with Deployment Manager at
dmgrHTTPsrv.mycompany.com:8879
ADMU0009I: Successfully connected to Deployment Manager Server:
dmgrHTTPsrv.mycompany.com:8879
ADMU0505I: Servers found in configuration:
ADMU0506I: Server name: server1
ADMU2010I: Stopping all server processes for node mysrVNODE01
ADMU0512I: Server server1 cannot be reached. It appears to be stopped.
ADMU0024I: Deleting the old backup directory.
ADMU0015I: Backing up the original cell repository.
ADMU0012I: Creating Node Agent configuration for node: mysrVNODE01
ADMU0014I: Adding node mysrVNODE01 configuration to cell: mysrVCELL01
ADMU0016I: Synchronizing configuration between node and cell.
ADMU0018I: Launching Node Agent process for node: mysrVNODE01
ADMU0020I: Reading configuration for Node Agent process: nodeagent
ADMU0022I: Node Agent launched. Waiting for initialization status.
ADMU0030I: Node Agent initialization completed successfully. Process id is:
29873

ADMU0300I: The node mysrVNODE01 was successfully added to the
mysrVCELL01 cell.

ADMU0306I: Note:
ADMU0302I: Any cell-level documents from the standalone pvt0dub118Cell01
configuration have not been migrated to the new cell.
ADMU0307I: You might want to:
ADMU0303I: Update the configuration on the pvt0dub118Cell01 Deployment Manager
with values from the old cell-level documents.

ADMU0306I: Note:
ADMU0304I: Because -includeapps was not specified, applications installed on
the standalone node were not installed on the new cell.
ADMU0307I: You might want to:
ADMU0305I: Install applications onto the pvt0dub118Cell01 cell using wsadmin
$AdminApp or the Administrative Console.

ADMU0003I: Node pvt0dub120Node01 has been successfully federated.
[root@pvt0dub120 bin]#

```

Figure 24. Command prompt to show the Application Server federation to the Deployment Manager

___ 11. Restart the Deployment Manager for the changes to load correctly.

Installing and configuring the HTTP Server and WebSphere plug-ins

Setting up the IBM HTTP Server and Web Server plug-ins for WebSphere and the WebSphere Customization Toolbox

1. Start the IBM Installation Manager.
2. From the main menu, select **File > Preferences** and in the Repositories pane click **Add Repository**.

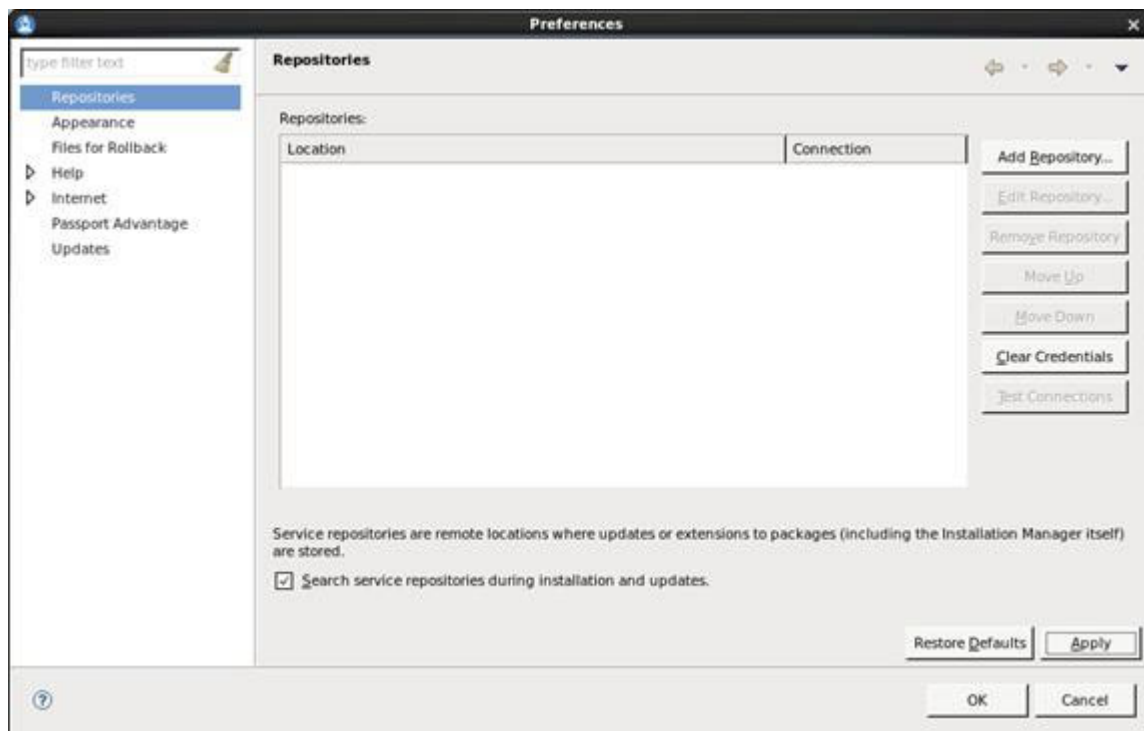


Figure 25. IBM Installation Manager - Preferences

3. Browse to the location where you extracted the WebSphere supplements installation media, select the `repository.config` file, and then click **OK**.

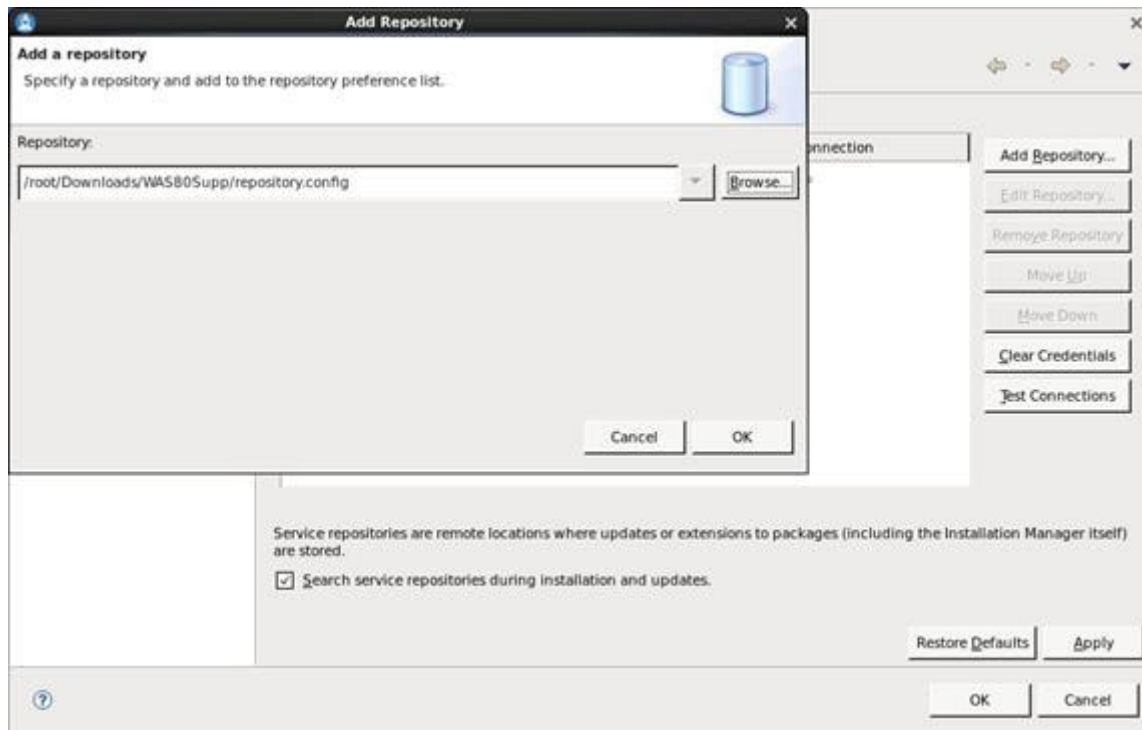


Figure 26. IBM Installation Manager - Add Repository

4. Click **Apply** to save the changes and **OK** to return to the main Installation Manager window.



Figure 27. IBM Installation Manager - Main screen

5. On the main Installation Manager window, click the **Install** icon.

6. On the Install Packages window, select **IBM HTTP Server for WebSphere Application Server**, the Web Server Plug-ins for IBM WebSphere Application Server, and the WebSphere Customization Toolbox packages. Then, click **Next** to continue.

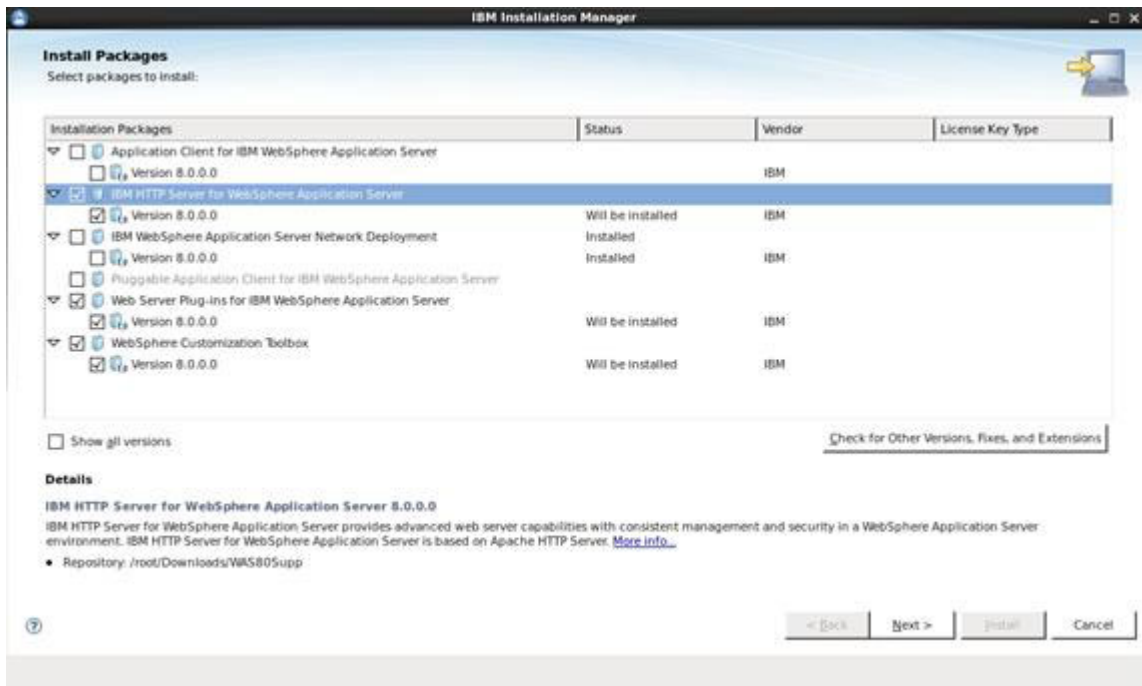


Figure 28. IBM Installation Manager - Install Packages

7. On the Software License agreement page, review the License Agreements and select **I accept the terms in the license agreements**. When you are ready, click **Next** to continue.

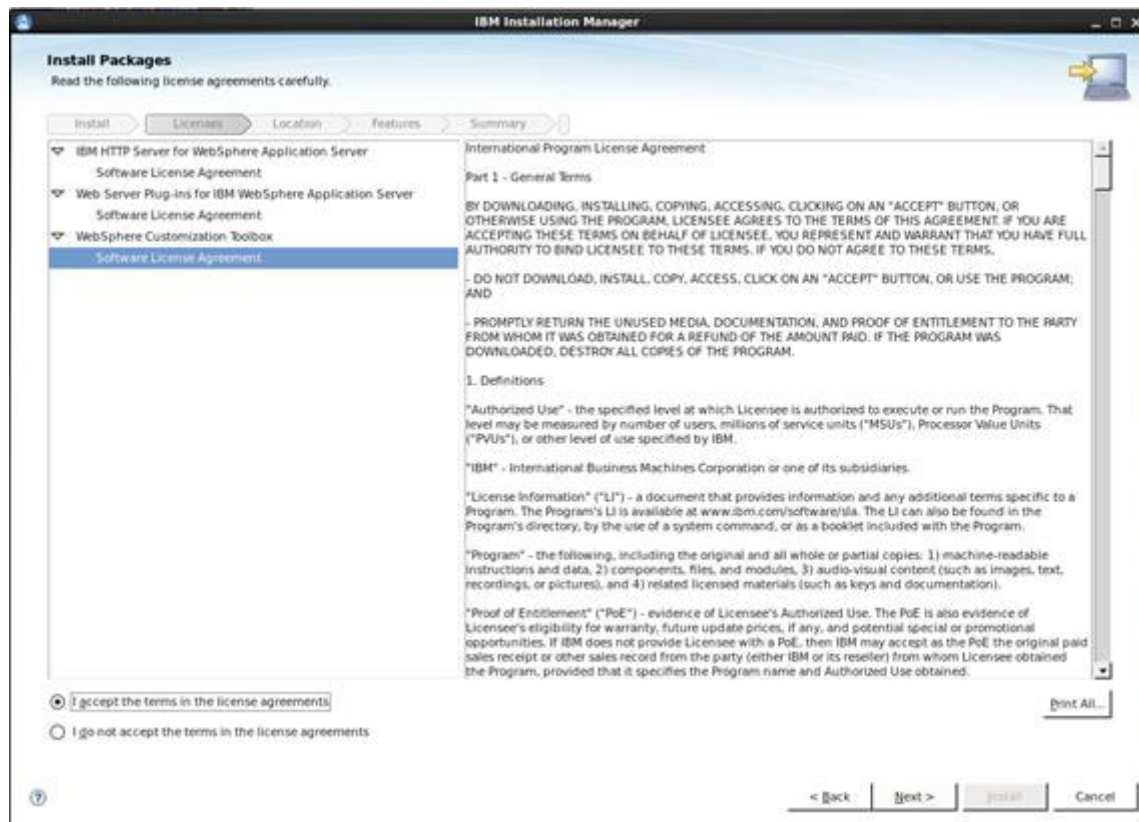


Figure 29. IBM Installation Manager - License agreements page

8. On the Package Groups options page, review the group entries and verify the installation paths. Then, click **Next** to continue.

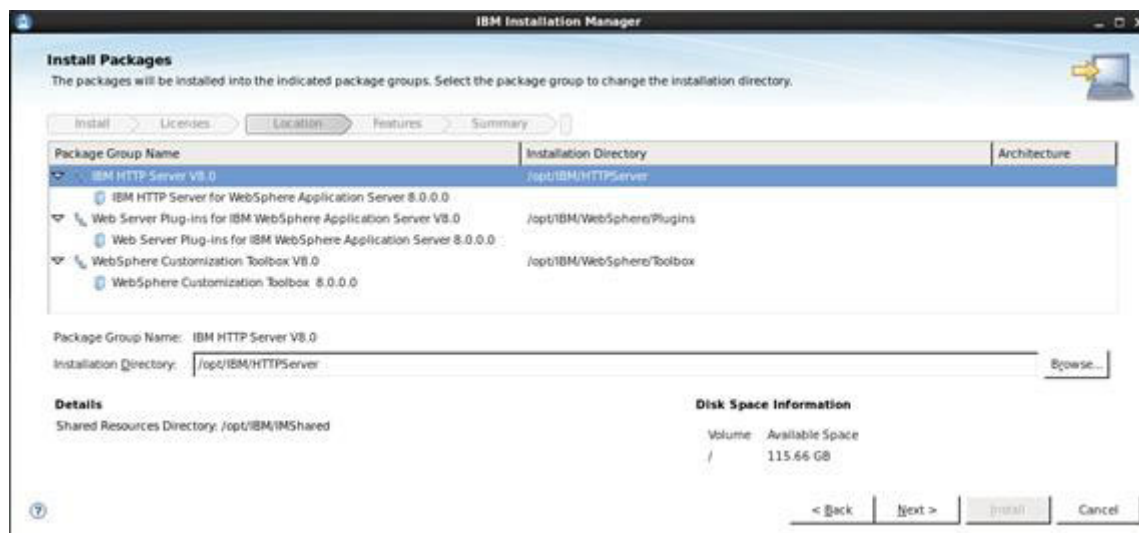


Figure 30. IBM Installation Manager - Installation paths verification

9. On the Features selections page, verify the components that you would like to install and click **Next** to continue.

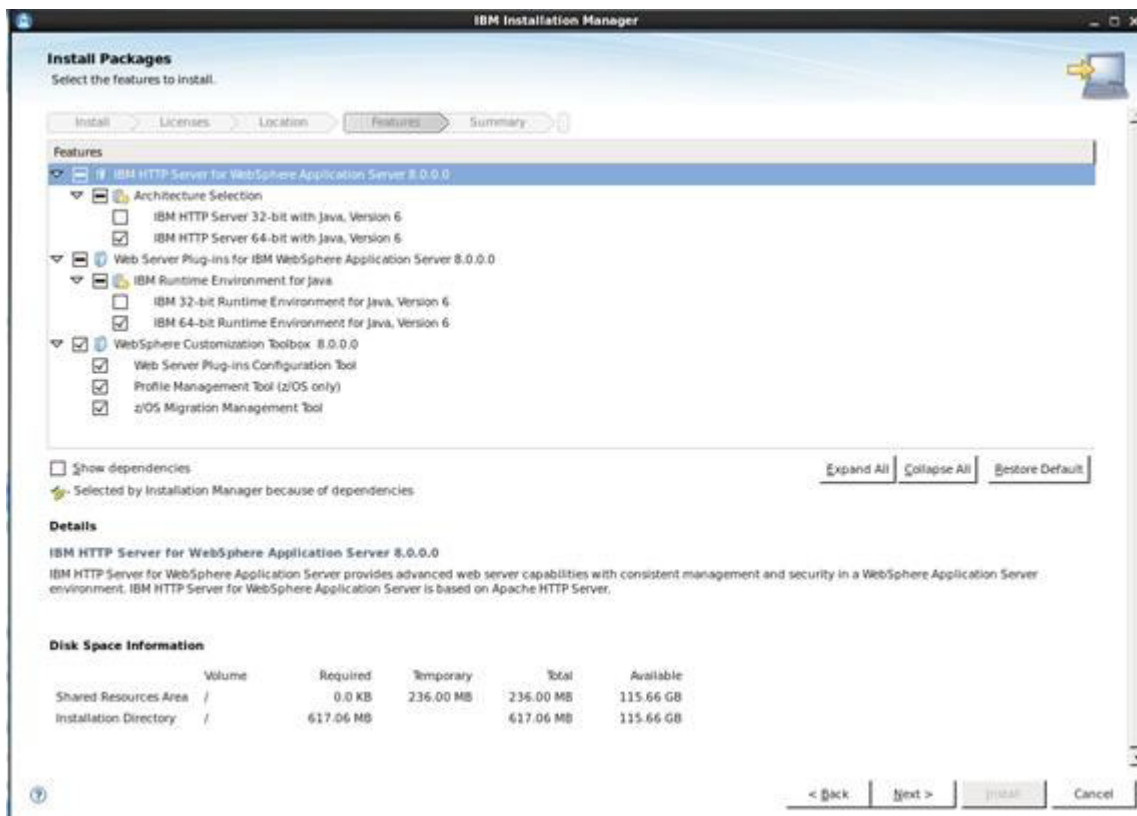


Figure 31. IBM Installation Manager - Components verification

10. In the Web Server Configuration, use the default value of 80 unless it is necessary to run the HTTP server on a different port. Click **Next** to continue.



Figure 32. IBM Installation Manager - Web server configuration

- ___ 11. On the Packages Summary page, verify the correctness of the packages to install and click **Install** to continue.

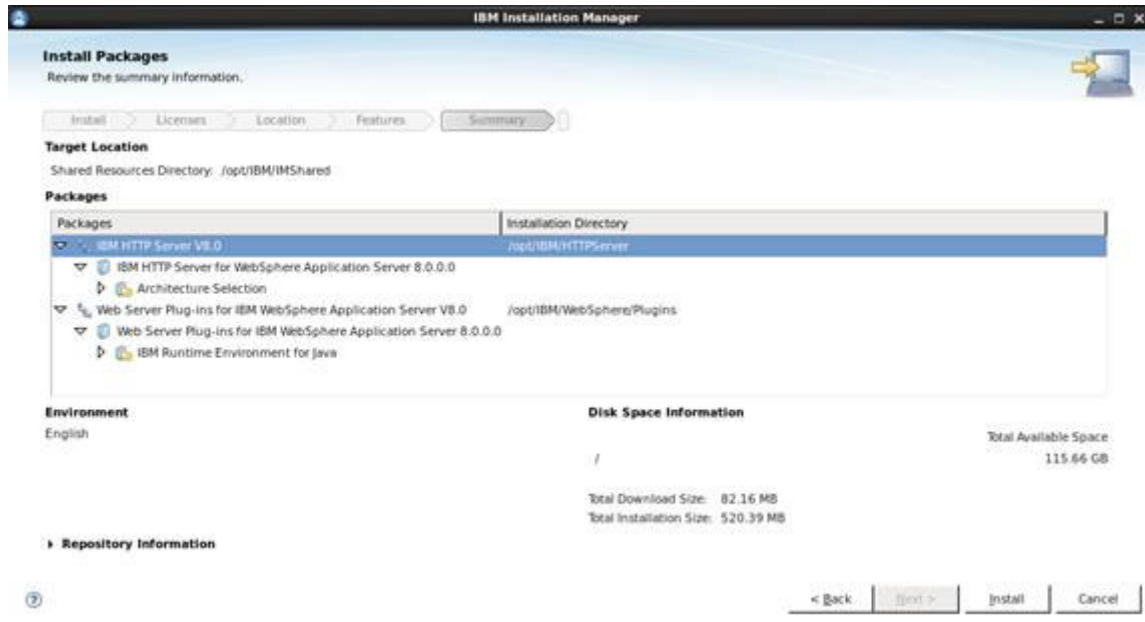


Figure 33. IBM Installation Manager - Packages Summary page

- ___ 12. The wizard installs the packages and displays the Installation Summary page. Make sure that all packages installed correctly. In the "Which program do you want to start?" section, make sure that the **WebSphere Customization Toolbox** option is selected and click **Finish** to exit the wizard.



Figure 34. IBM Installation Manager - Install Packages page

- ___ 13. The WebSphere Customization Toolbox should now start. In the Web Server Plug-in Configuration section, click **Create**.

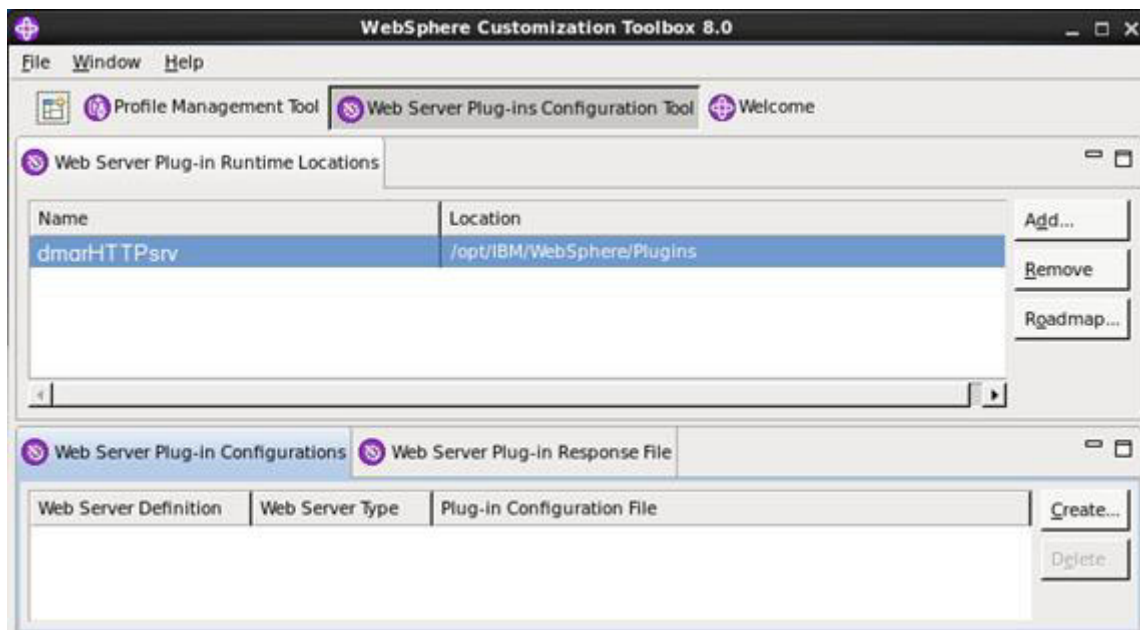


Figure 35. WebSphere Customization Toolbox 8.0

- ___ 14. On the Web Server Selection page, select **IBM HTTP Server V8** and click **Next** to continue.



Figure 36. Web Server Plug-ins Configuration Tool 8.0 - Web Server Selection

- ___ 15. On the Web Server Architecture Selection page, select the correct bit value for your installation environment.



Figure 37. Web Server Plug-ins Configuration Tool 8.0 - Web Server Architecture Selection

- ___ 16. On the Web Server Configuration File Selection page, verify that the path to the `httpd.conf` file is correct and that the port is the same as previously set in Step 10.

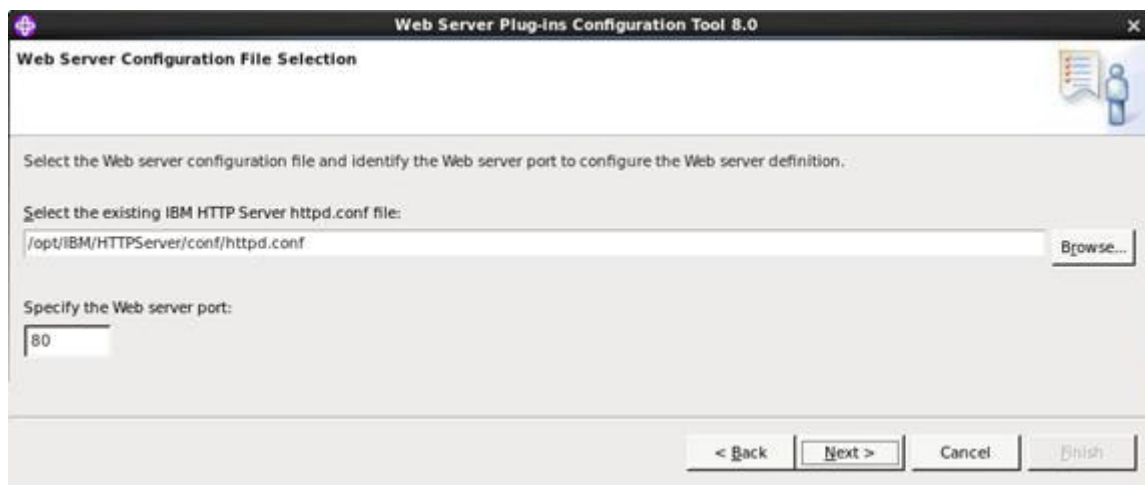


Figure 38. Web Server Plug-ins Configuration Tool 8.0 - Web Server Configuration File Selection

17. On the Setup IBM HTTP Server Administration Server page, leave the default port value unaltered unless it is necessary to run the HTTP Administration Server on a different port. Complete the User ID and the two password fields. Then, click **Next** to continue.

Web Server Plug-ins Configuration Tool 8.0

Setup IBM HTTP Server Administration Server

Optionally configure an administrative server to administer the Web server. You can manage the Web server from a WebSphere Application Server administrative console by using the IBM HTTP Server administrative server to control the communication between them.

Setup IBM HTTP Server Administration Server

Specify a port number for IBM HTTP Server administration server to communicate. The default port is 8008. If the default port is already in use, then change to another port that is available. Running IBM HTTP Server administration server without root or Administrative privileges might restrict use of ports below 1024.

HTTP Administration Port:
8008

Optionally create a user ID and password to authenticate to the IBM HTTP Server Administration Server from the WebSphere Application Server administrative console. The user ID and password is encrypted and stored in the conf/admin.passwd file. You can create additional user IDs after the configuration by using the htpasswd utility.

Create a user ID for IBM HTTP Server Administration Server authentication

User ID: ihsadmin

Password:

Confirm password:

< Back Next > Cancel Finish

Figure 39. Web Server Plug-ins Configuration Tool 8.0 - Setup IBM HTTP Server Administration Server

18. On the Setup IBM HTTP Server Administration second page, set the User ID and Group for the HTTP Administrator system account and click **Next** to continue.

Web Server Plug-ins Configuration Tool 8.0

Setup IBM HTTP Server Administration Server

Specify a system user ID and group. The user ID is granted write access to IBM HTTP Server, IBM HTTP Server Administration Server and web server plug-in configuration files. If the user ID or group does not exist on the system, then choose to create a new system user and group with the credentials.

User ID: ihsadmin

Group: ihsadmin

Create a new unique system user ID and group using the credentials.

< Back Next > Cancel Finish

Figure 40. Web Server Plug-ins Configuration Tool 8.0 - Setup IBM HTTP Server Administration Server

- ___ 19. In the Web Server Definition Name, specify a name for the web server or use the default value and click **Next** to continue.

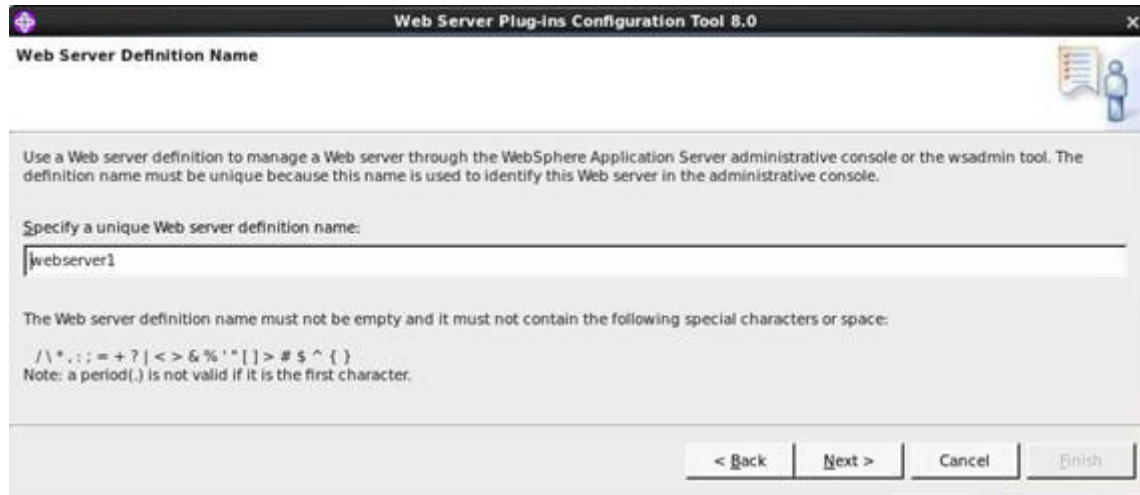


Figure 41. Web Server Plug-ins Configuration Tool 8.0 - Web Server Definition Name

- ___ 20. On the Configuration Scenario Selection page, select **(Remote) Host name or IP address of the application server** and enter the fully qualified domain name of the Deployment Manager. Then, click **Next** to continue.

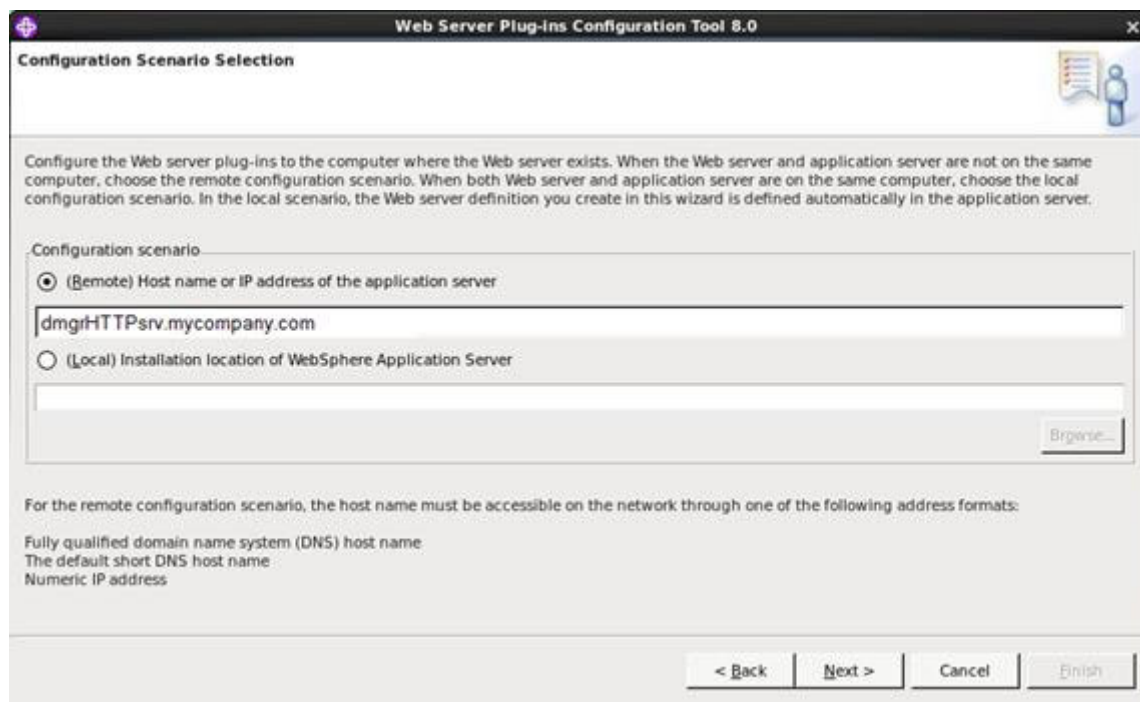


Figure 42. Web Server Plug-ins Configuration Tool 8.0 - Configuration Scenario Selection

- ___ 21. On the Plug-in Configuration Summary page, review the information and click **Configure** to continue.



Figure 43. Web Server Plug-ins Configuration Tool 8.0 - Plug-in Configuration Summary

22. On the Plug-in Configuration Result page, clear **Launch the plug-in configuration roadmap** and click **Finish** to continue.



Figure 44. Web Server Plug-ins Configuration Tool 8.0 - Plug-in Configuration Result

The Web Server Plug-In Configurations and the Web Server Plug-In Runtime Locations sections should now list a single IBM HTTP Server each.

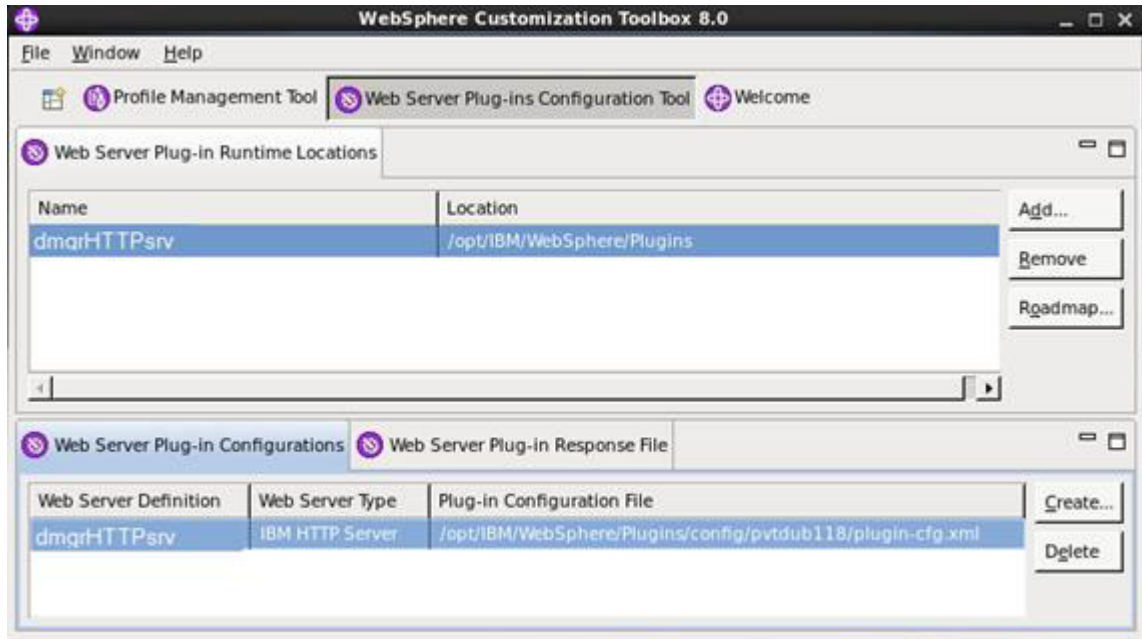


Figure 45. Web Server Plug-ins Configuration Tool 8.0 - Web Server Plug-In Configurations and Web Server Plug-In Runtime sections listing a single IBM HTTP Server each

___ 23. Close the WebSphere Customization Toolbox.

Configuring the HTTP Server for SSL

Creating a self-signed SSL certificate



Note

If you are going to use a certificate signed by a certificate authority for your deployment, then it is not necessary to generate a self-signed SSL certificate. To accept a certificate authority signed certificate, see [Receiving a signed certificate from a certificate authority](http://pic.dhe.ibm.com/infocenter/wasinfo/v8r0/index.jsp?topic=/com.ibm.websphere.ihs.doc/info/ihs/ihs/welc_ikeymangui.html), http://pic.dhe.ibm.com/infocenter/wasinfo/v8r0/index.jsp?topic=/com.ibm.websphere.ihs.doc/info/ihs/ihs/welc_ikeymangui.html.

1. To generate a self-signed certificate, log in to the HTTP server host as root and open a command prompt. Change working directory to `/opt/IBM/HTTPServer/bin` and run `./ikeyman` to start the IBM Key Management tool.

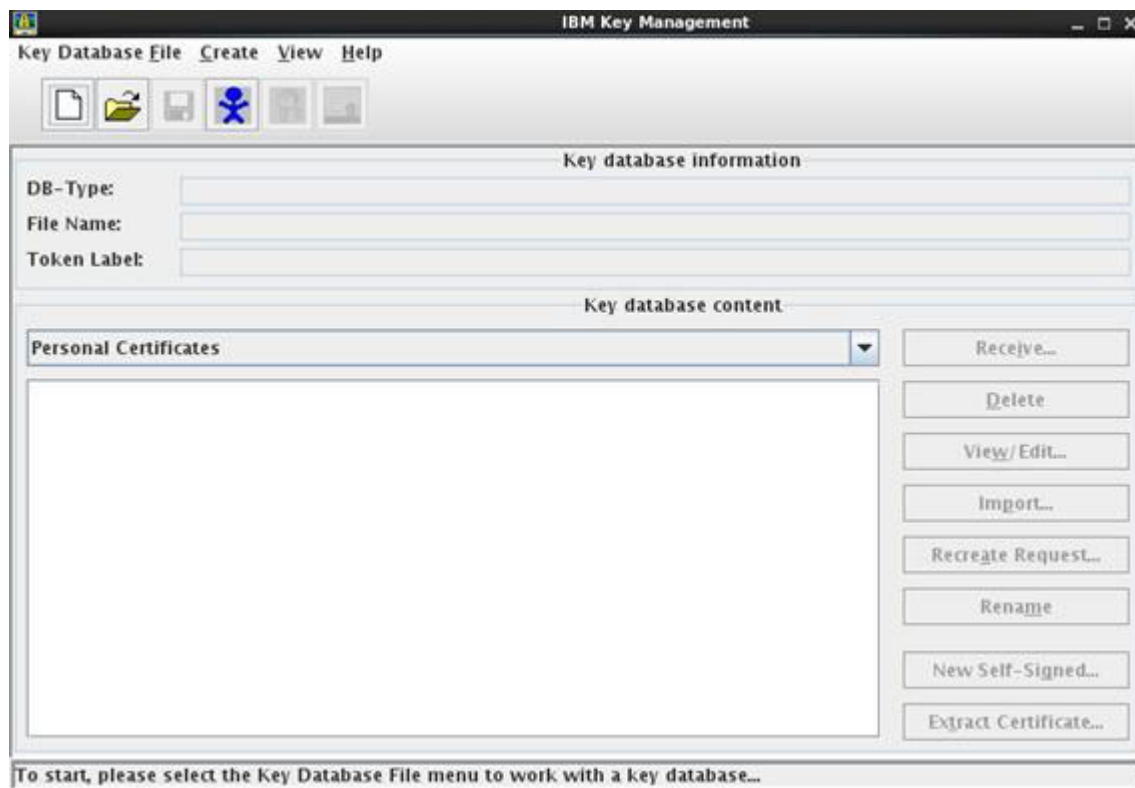


Figure 46. IBM Key Management

2. From the main menu, select **Key Database File > New**.

- ___ 3. Give a name for the key database file and set the path to where you would like to store this file.



Figure 47. IBM Key Management - New file

- ___ 4. When you click **OK** in the New key database field dialog, you are asked to enter a password to protect the file. Enter a password, check off the option **Stash password to a file** and click **OK**.



Figure 48. IBM Key Management - Password Prompt

5. The tool returns to the main panel of the Key Management utility with the new file opened.

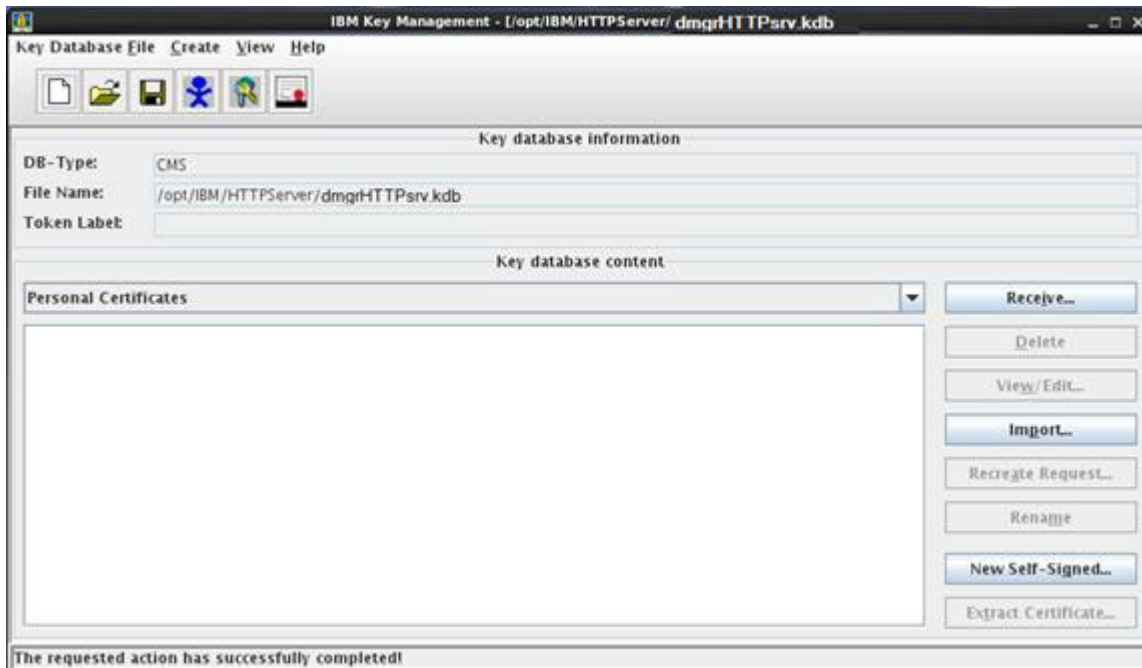


Figure 49. IBM Key Management - Main panel

6. Click **New Self-Signed** and enter the required information into the Create New Self-Signed Certificate window and click **OK**.

Create New Self-Signed Certificate

Please provide the following:

Key Label		SelfSignedCertificate
Version		X509 V3
Key Size		1024
Signature Algorithm		SHA1WithRSA
Common Name	(optional)	dmgrHTTPsrv.mycompany.com
Organization	(optional)	
Organizational Unit	(optional)	
Locality	(optional)	
State/Province	(optional)	
Zipcode	(optional)	
Country or region	(optional)	
Validity Period		365 Days
Subject Alternative Names		
Email Address	(optional)	
IP Address	(optional)	
DNS Name	(optional)	

OK **Reset** **Cancel**

Figure 50. IBM Key Management - Create New Self-Signed Certificate

7. The tool returns to the main panel of the Key Management utility with the new self-signed certificate shown under the Key database content panel. Exit the Key Management Utility and proceed to configuring the HTTP server to use this certificate.

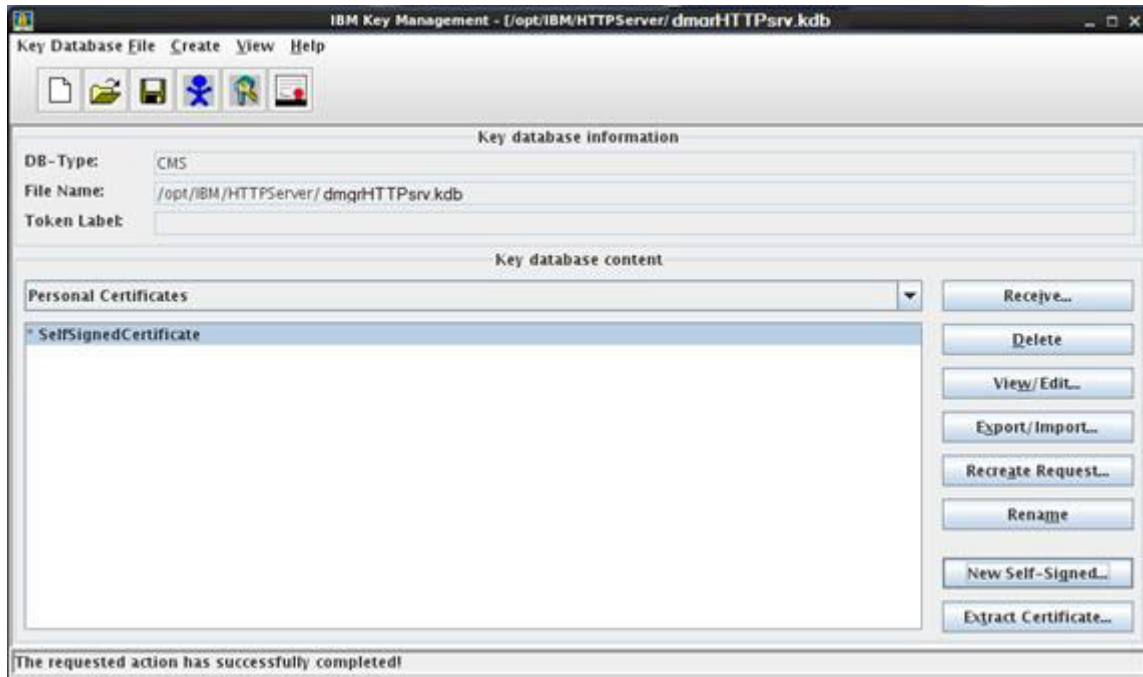


Figure 51. IBM Key Management - Main panel

Adding the self-signed certificate to the HTTP server

- ___ 1. Open the `httpd.conf` file under the `/opt/IBM/HTTPServer/conf` directory.
- ___ 2. Enter an SSL virtual host stanza before the `LoadModule was_ap22_module` and `WebSpherePluginConfig` sections:

```
LoadModule ibm_ssl_module modules/mod_ibm_ssl.so
Listen 443
<VirtualHost *:443>
SSLEnable
</VirtualHost>
SSLDisable
KeyFile "/opt/IBM/HTTPServer/key.kdb"
```

- ___ 3. Save the file and restart the server. The server should now allow SSL connections

Setting up the IBM HTTP Server on Deployment Manager

- ___ 1. Log in to the Deployment Manager console by using the WebSphere Application Server Administrator credentials and go to **System administration > Nodes** and then click **Add Node**. Select **Unmanaged node** from the list and click **Next** to continue.

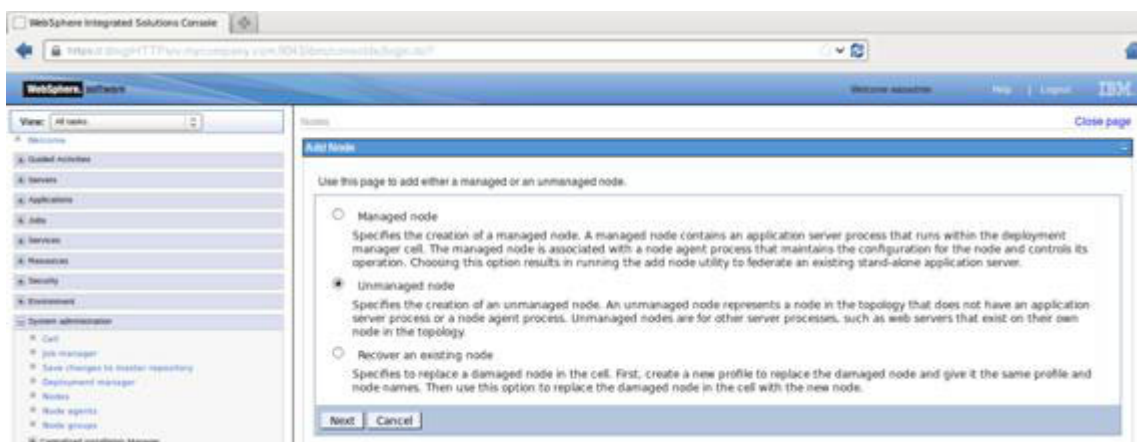


Figure 52. WebSphere Integrated Solutions Console

- On the Node configuration screen, enter the Name, the Host Name, and Platform Type of the server, and click **Apply**. Then, click **Save**.

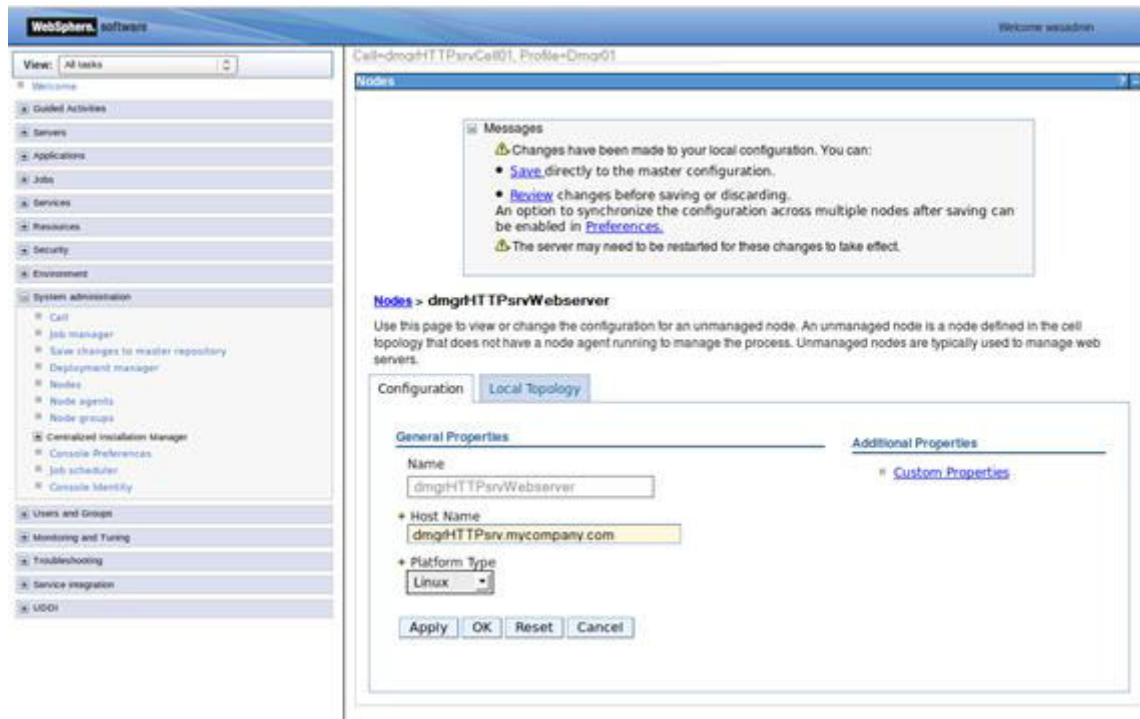


Figure 53. WebSphere Integrated Solutions Console - Node configuration screen

The Nodes list should now display the newly added webserver node.

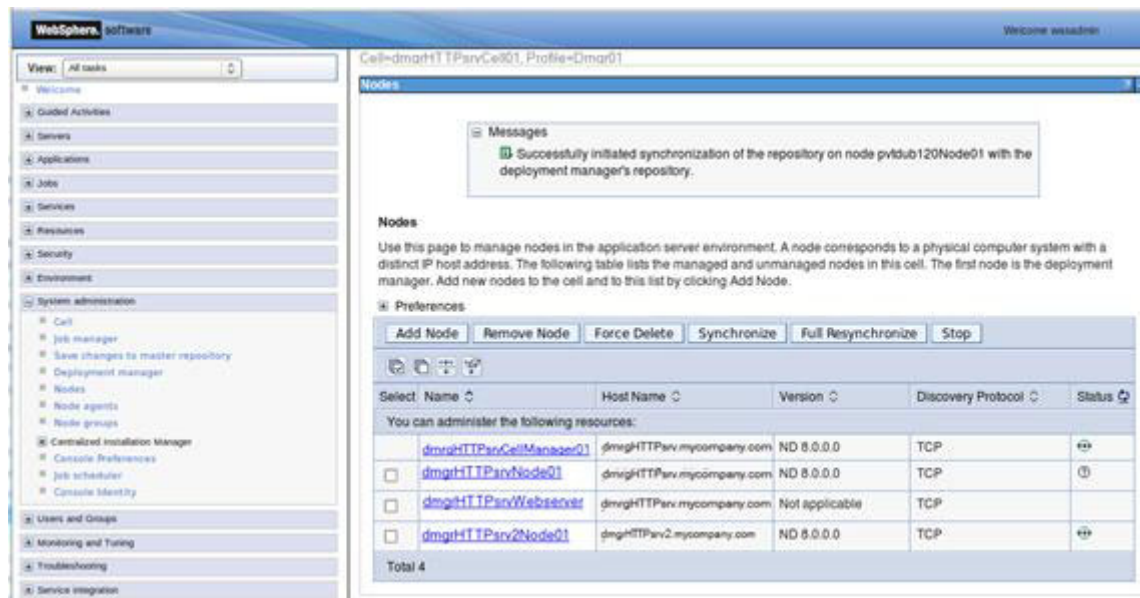


Figure 54. WebSphere Integrated Solutions Console - Nodes list

3. In the console, go to **Servers > Server Types > Web servers** and select **New**. Select the previously created web server node, enter a Server name, and for type, select IBM HTTP Server. Click **Next** to continue.

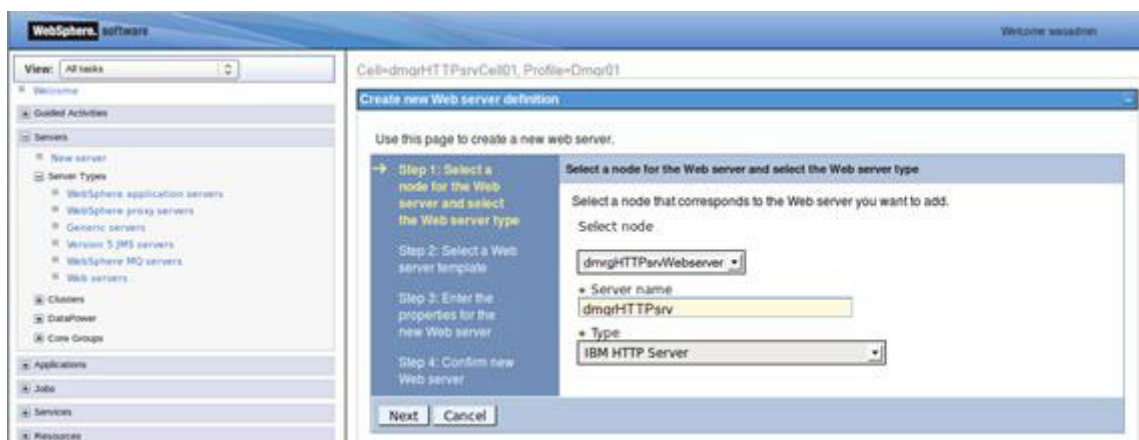


Figure 55. WebSphere Integrated Solutions Console - Select a node for the Web server and the Web server type

4. In the web server template selection page, keep the default IHS option and click **Next**.

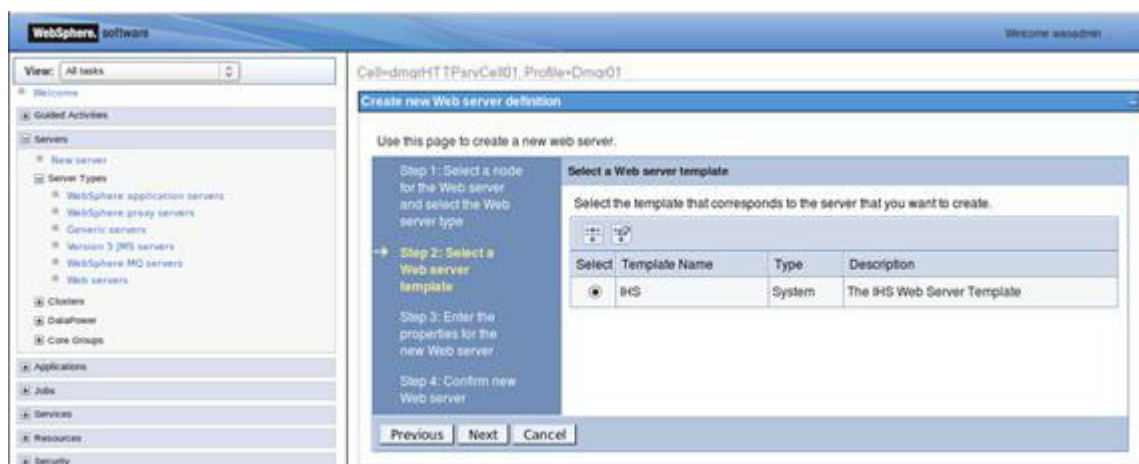


Figure 56. WebSphere Integrated Solutions Console - Select a Web server template

5. On the Web server properties page, enter the correct properties for the HTTP server and click **Next** to continue.

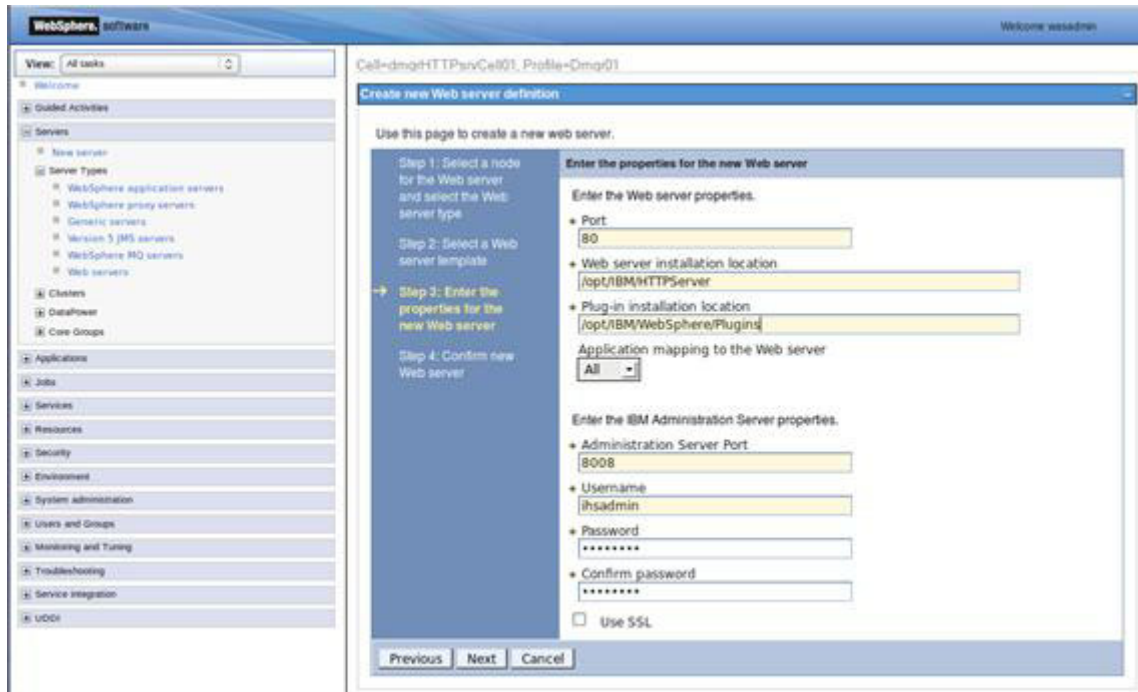


Figure 57. WebSphere Integrated Solutions Console - Enter properties for the new Web server

6. On the Summary of actions page, review the information. Click **Finish** and then **Save** to complete the web server definition.



Figure 58. WebSphere Integrated Solutions Console - Confirm new Web server

Database migration



Requirements

All the applications databases to be migrated must be at Connections version 4.0 level. Moreover, the Homepage and Metrics databases require schema upgrades that are based on the 4.0 Cumulative Refresh updates 2 and 3 as outlined in this following technote:

<http://www-01.ibm.com/support/docview.wss?uid=swg21616619>

The DB2 database server requires certain kernel parameters to be set on the system. Make sure that your DB2 host has set the following required kernel parameters:

- Kernel parameter requirements (Linux),

<http://pic.dhe.ibm.com/infocenter/db2luw/v10r1/topic/com.ibm.db2.luw.qb.server.doc/doc/c0057140.html>

You do not need to repopulate the Profiles database by using the Tivoli Directory Integrator. The database is already populated from the 4.0 installation and it is migrated to 4.5 by the Connections database wizards.

Upgrading existing 4.0.x databases to 4.5

- ___ 1. Copy the Connections 4.5 wizard from the installation media to the DB2 server.
- ___ 2. Change ownership of the Wizards files to the DB2 instance owner.
- ___ 3. Log in to the database server as the DB2 instance owner and make sure that the DB2 server is running.
- ___ 4. On a command prompt, change the working directory to the Wizards directory and start the wizard by running the `dbWizard.sh` script.

5. The database wizard for IBM Connections 4.5 should now start. Click **Next** to continue.

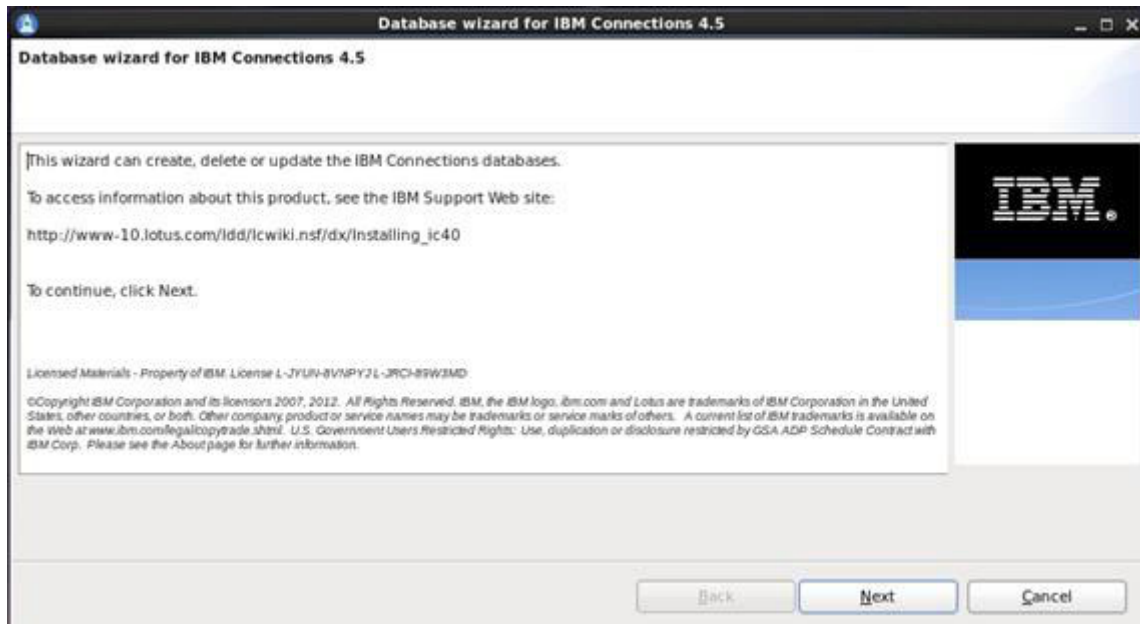


Figure 59. Database wizard for IBM Connections 4.5

6. On the Database task selection page, select the **Update operation only for IBM Connections database 4.0 to 4.5** option and click **Next** to continue.



Figure 60. Database wizard for IBM Connections 4.5 - Database task selection

7. On the database selection page, select the **DB2 Universal Database™** option. Set the correct database installation location and the correct database instance name, and click **Next** to continue.

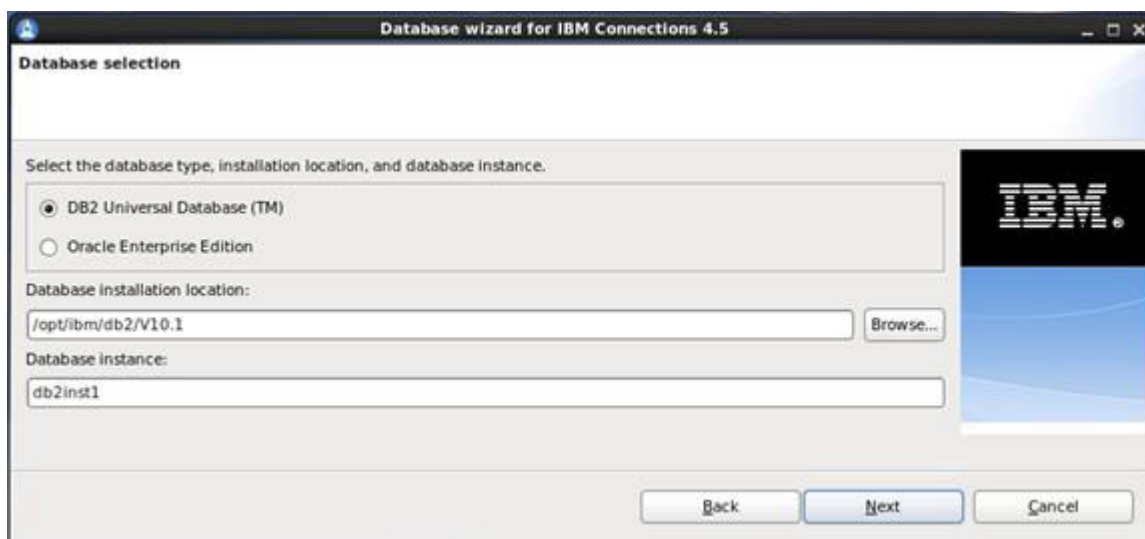


Figure 61. Database wizard for IBM Connections 4.5 - Database selection

8. On the Applications selection page, select all the Applications that must be upgraded to 4.5 and click **Next** to continue.

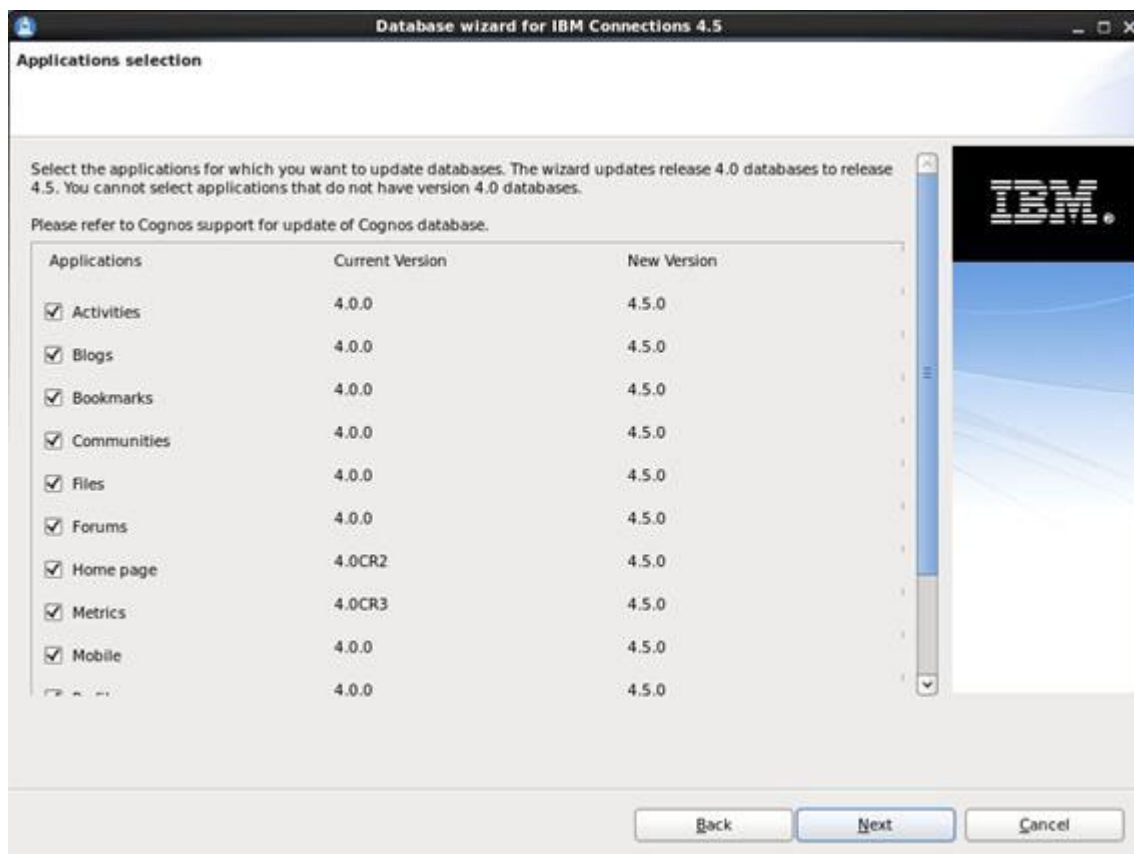


Figure 62. Database wizard for IBM Connections 4.5 - Applications selection

- ___ 9. In the database communication properties page, set the correct parameters and password for your database instance, and click **Next** to continue.

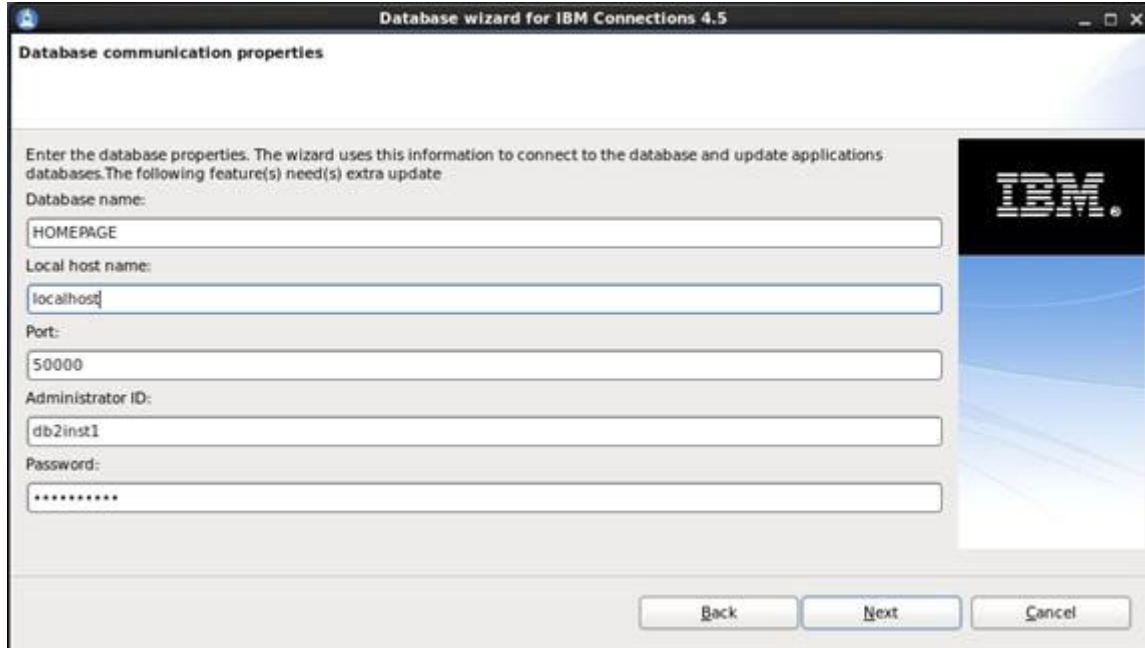


Figure 63. Database wizard for IBM Connections 4.5 - Database communication properties

10. On the Pre-configuration tasks summary page, review the migration tasks for the wizard to run. Click **Update** to start the migration process or select **Show the detailed database commands** if you would like to see the list of the scripts for the wizard to run.

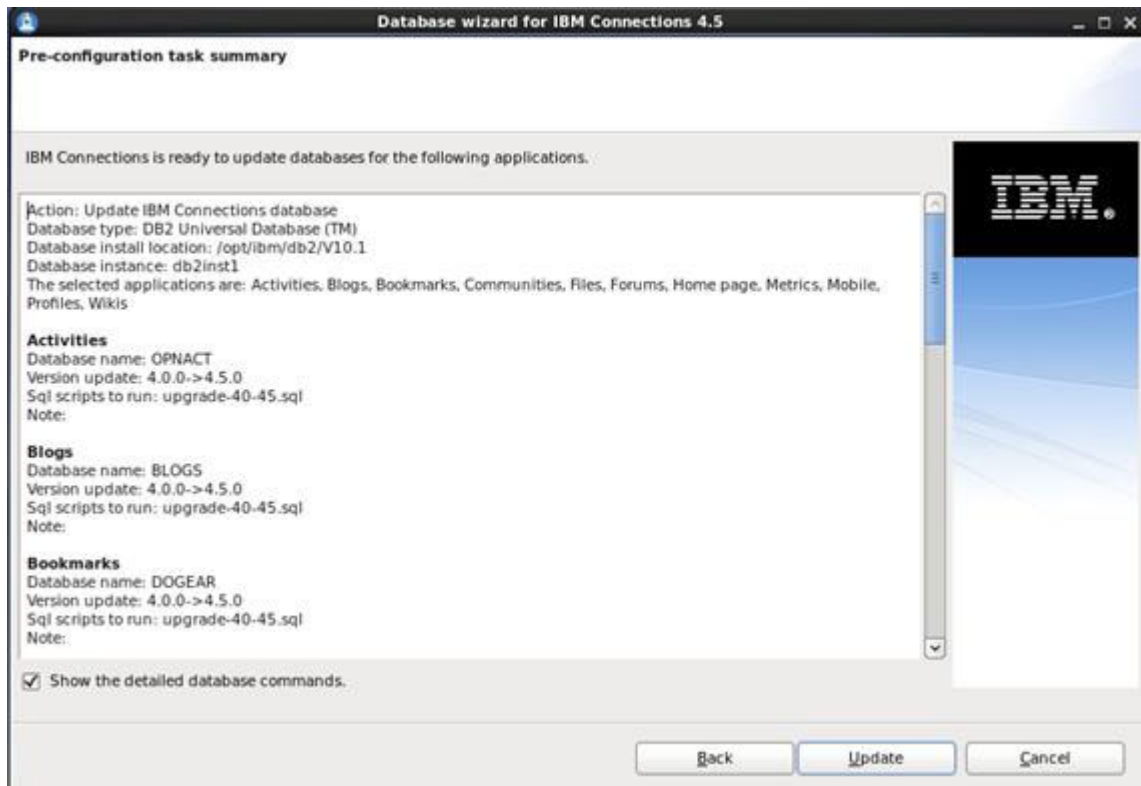


Figure 64. Database wizard for IBM Connections 4.5 - Pre-configuration task summary

11. If you selected **Show the detailed database commands**, the wizard shows the database update detailed command page. Review the commands and click **Execute** to start the upgrade process.

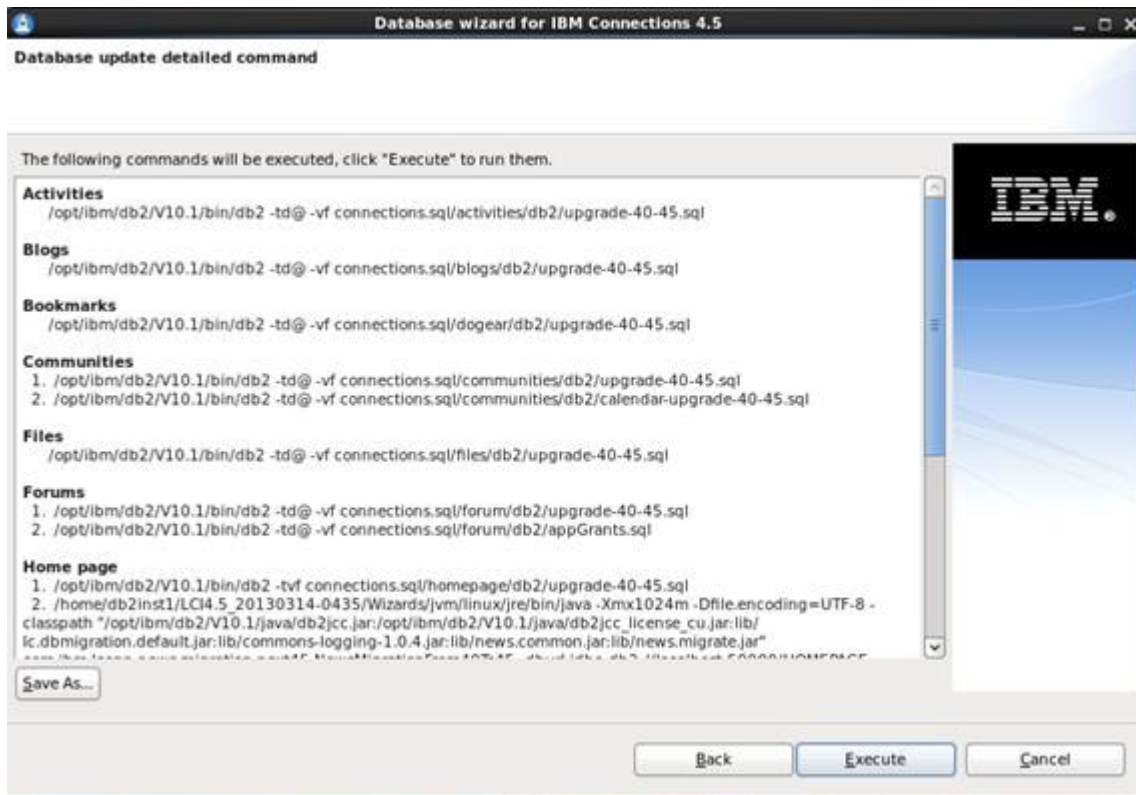


Figure 65. Database wizard for IBM Connections 4.5 - Database update detailed command

The wizard start running the scripts that are required for the migration to Connections 4.5. The amount of time that is needed to run this process depends on the data the existing 4.0 databases hold.

12. After the wizard completes the migration, it displays the Post configuration task summary page. Review the information there and make sure that no errors are reported. Click **Finish** to exit the wizard.

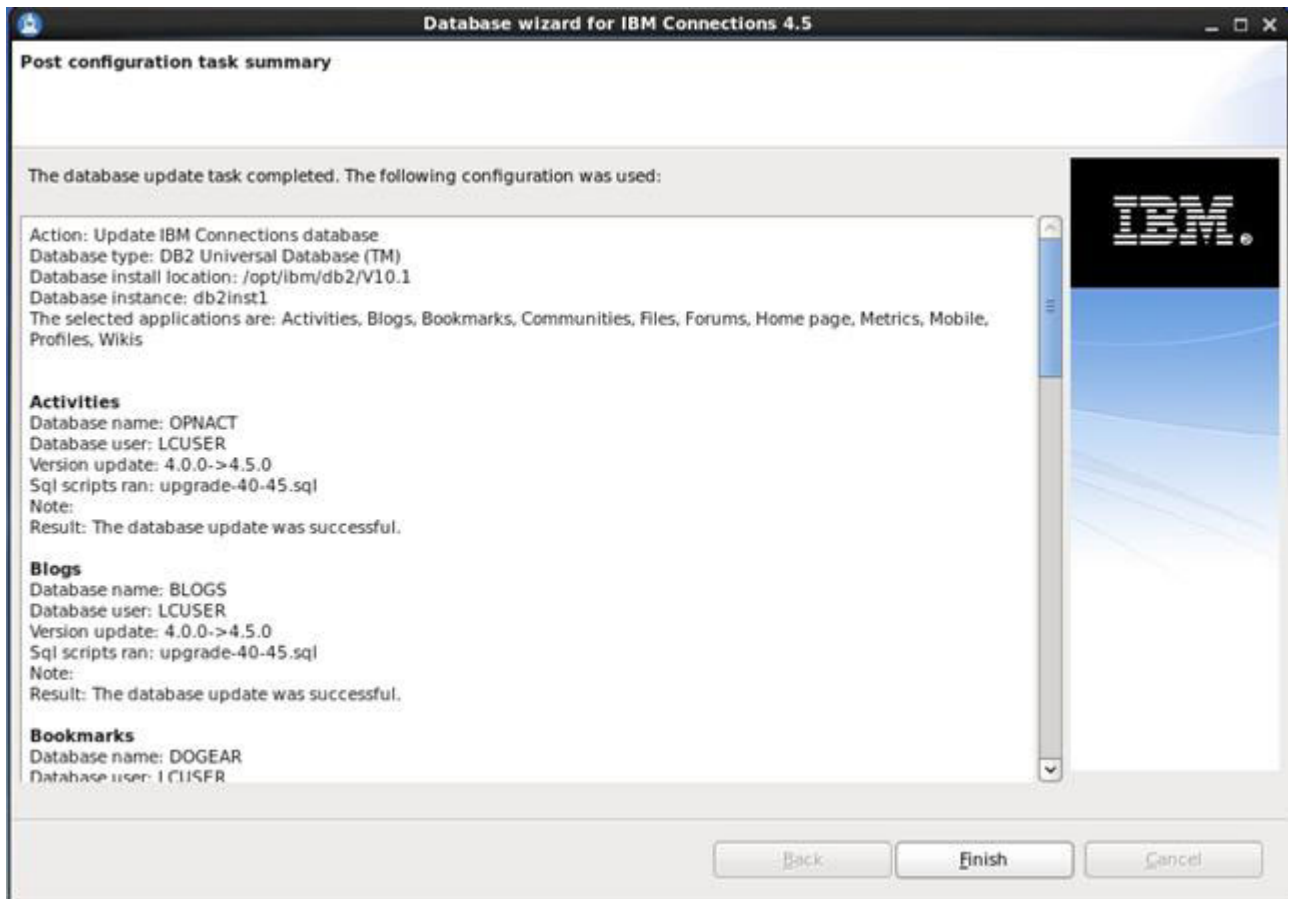


Figure 66. Database wizard for IBM Connections 4.5 - Post configuration task summary

Installing IBM Connections



Requirements

Review the software and hardware requirements for the systems to host IBM Connections and make sure that all requirements are met for installing Connections 4.5.

Most importantly, the requirements for WebSphere 7.0 for Connections 4.0 changed to WebSphere version 8.0 for Connections 4.5. To proceed with the Connections 4.5 migration from Connections 4.0, the WebSphere version must be updated.

For more information about the system requirement, see the IBM Connections system requirements topic, <http://www-01.ibm.com/support/docview.wss?rs=899&uid=swg27012786>

Installing IBM Connections 4.5

- ___ 1. Copy the Connections 4.5 installation media to the computer that hosts the WebSphere Deployment Manager and extract the installation files.
- ___ 2. Log in to the server that hosts the WebSphere Deployment Manager as root and start the Deployment Manager.
- ___ 3. Start the IBM Installation Manager and from the main menu open **File > Preferences**.
- ___ 4. In the Preferences window, select **Repositories**.

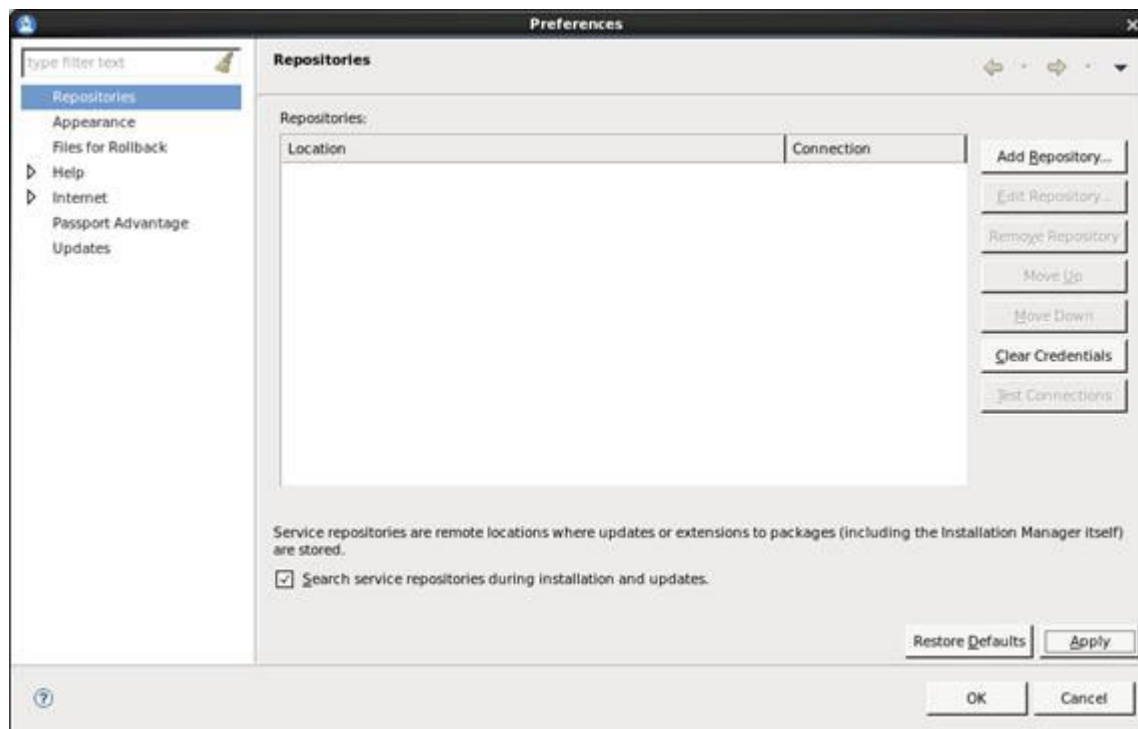


Figure 67. IBM Installation Manager - Preferences

5. Click **Add Repository** and in the Add Repository dialog browse to the `repository.config` file under the location where you extracted the installation media/IBMConnections.

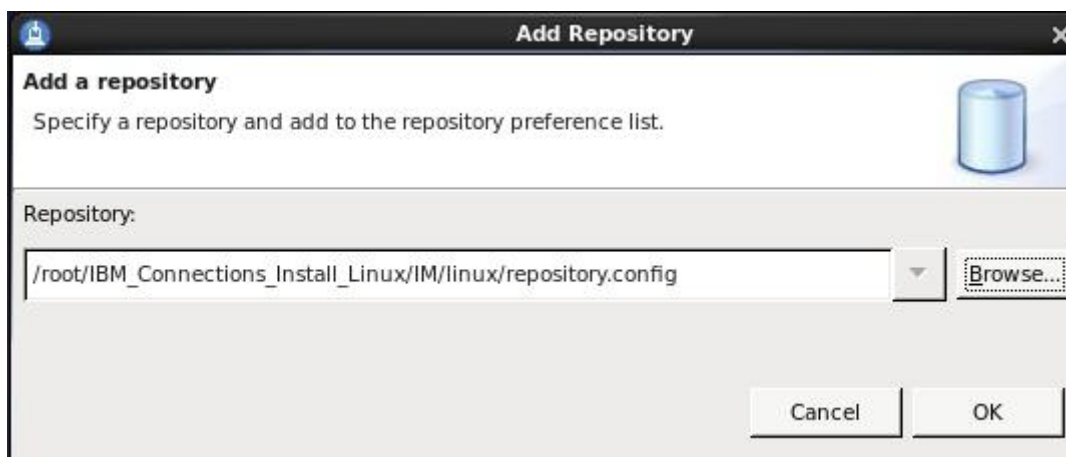


Figure 68. IBM Installation Manager - Add repository

6. Click **OK**, and then **Apply** and **OK**, to return to the main windows of the Installation Manager.
7. In the main Installation Manager window, click **Install**, and in the Install Packages window, select **IBM Connections**. Then, click **Next** to continue.

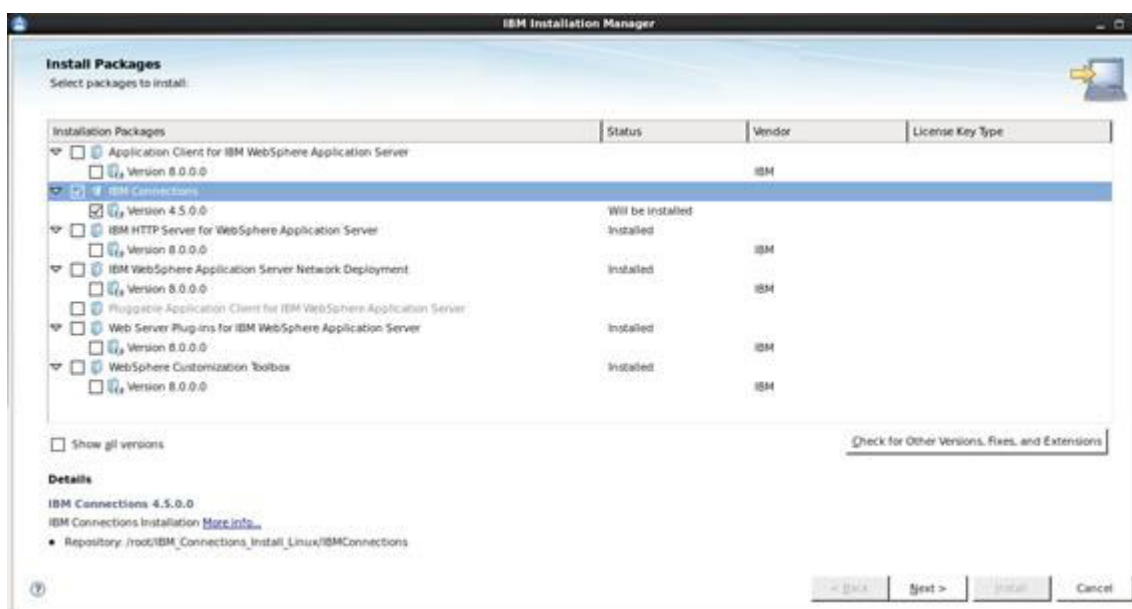


Figure 69. IBM Installation Manager - Install Packages

8. In the license agreements window, review the license agreements and select **I accept the terms in the license agreements**. Then, click **Next** to continue.

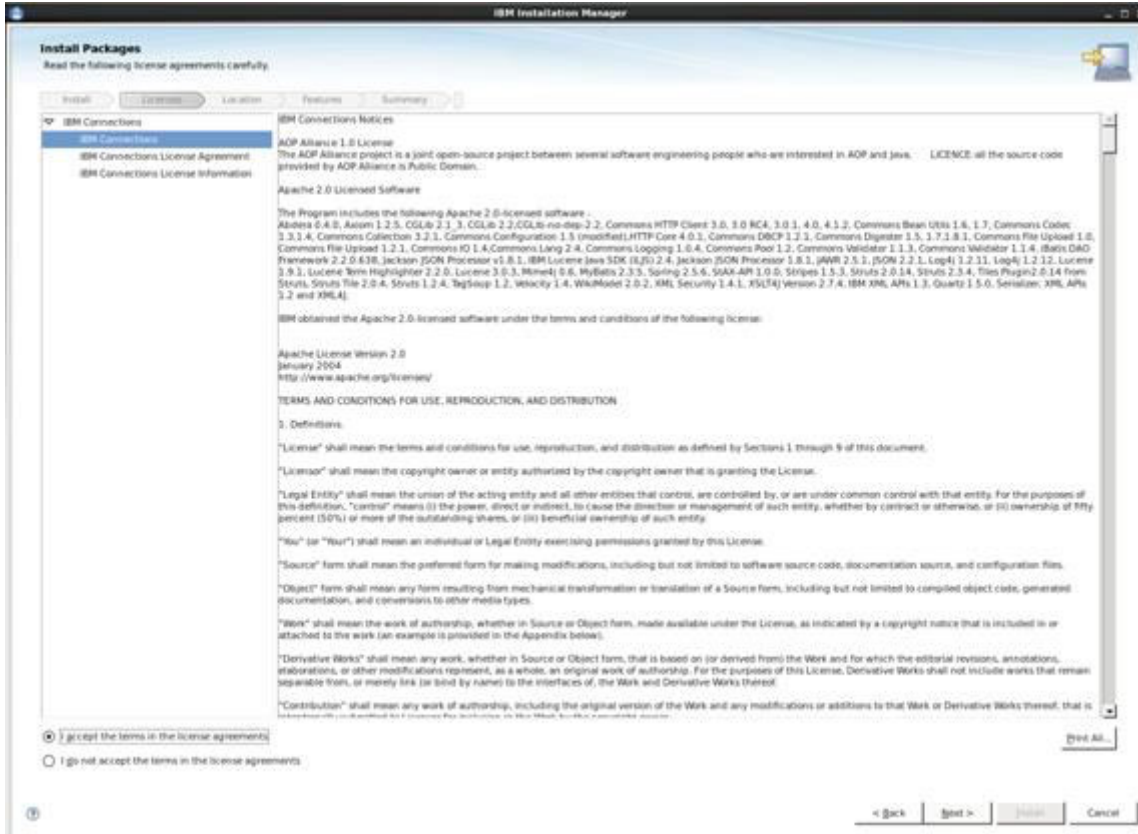


Figure 70. IBM Installation Manager - License agreements page

9. In the package group options window, select **Create a new package group** and set the Installation Directory to the location where you want to install Connections. Then, click **Next** to continue.

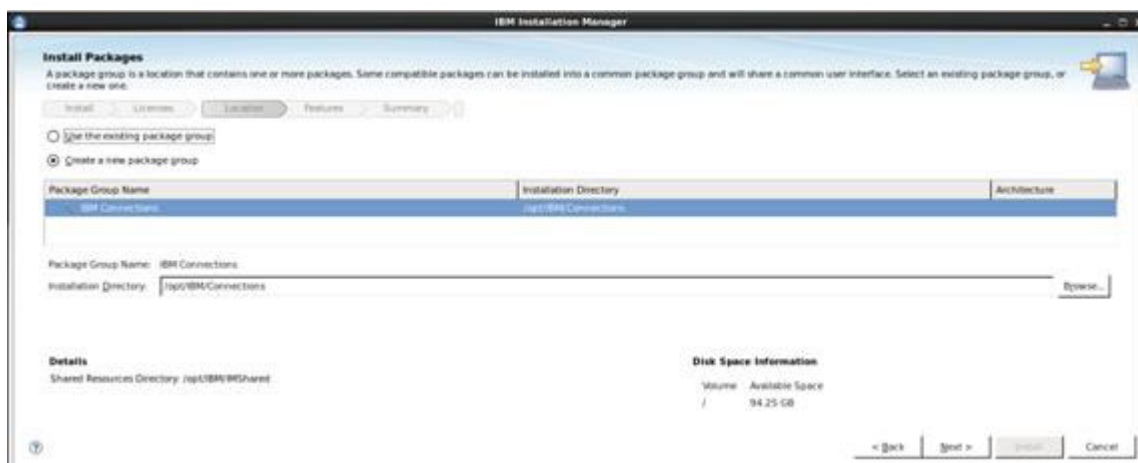


Figure 71. IBM Installation Manager - Select directory to install Connections

- ___ 10. In the features to install selection window, select the features to install and click **Next** to continue.



Note

The FileNet and Cognos features are not set in this installation.

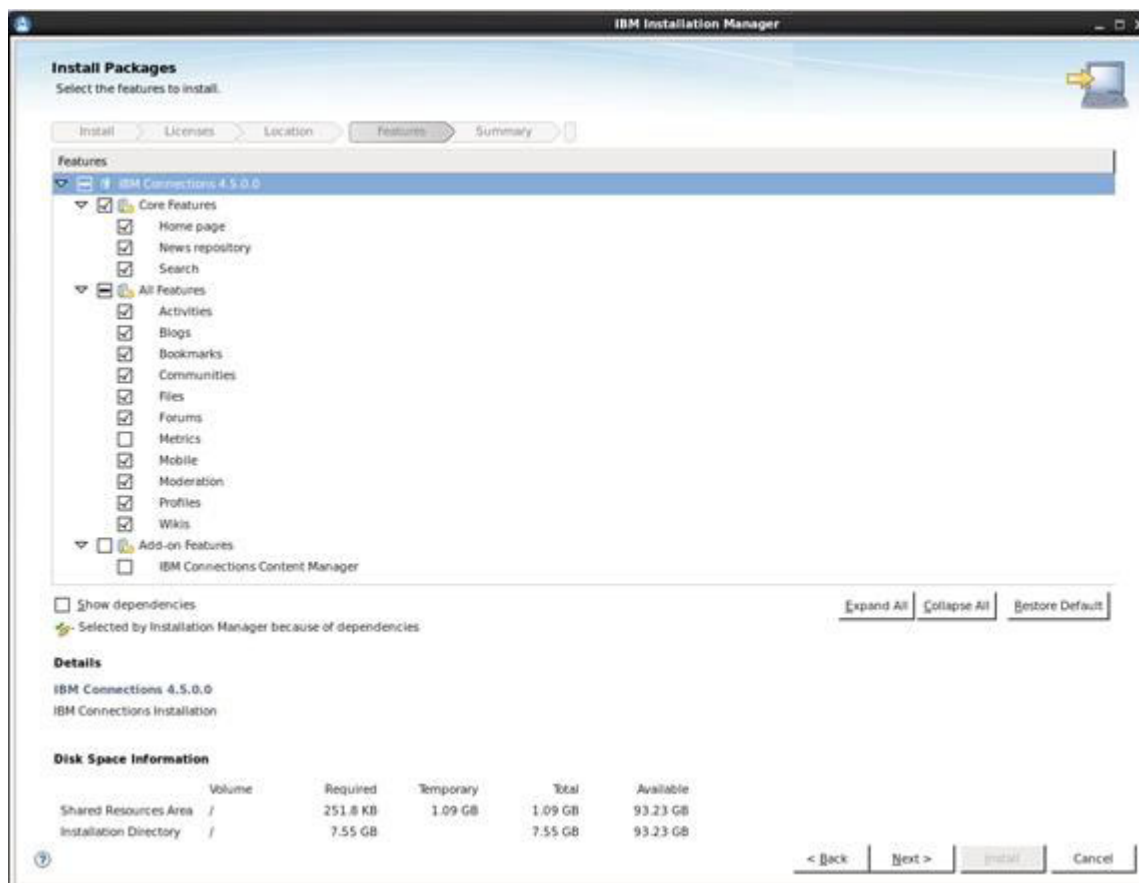


Figure 72. IBM Installation Manager - Select features to install

11. In the WebSphere configuration window, complete the installation details of the Deployment Manager and click **Validate** to check the settings. When validation successfully completes, click **OK** on the Information Dialog to close it and click **Next** to continue.

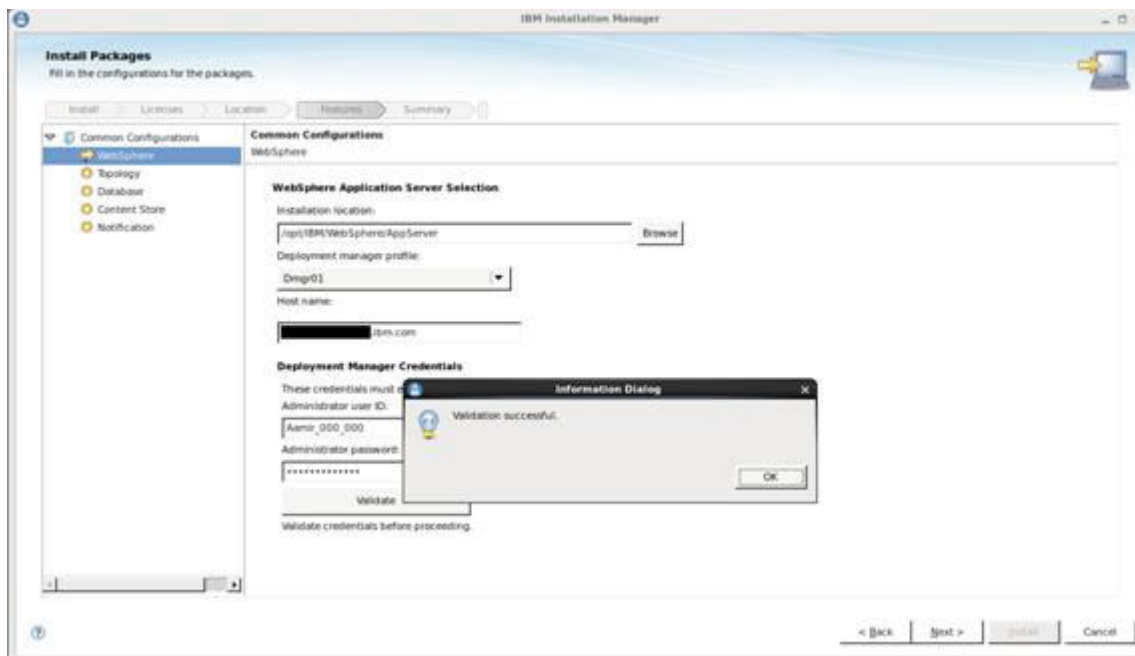


Figure 73. IBM Installation Manager - Packages configuration

12. On the Deployment Topology selection page, choose **Medium - Applications grouped in several clusters** and select all the nodes in each cluster. Then, click **Next** to continue.

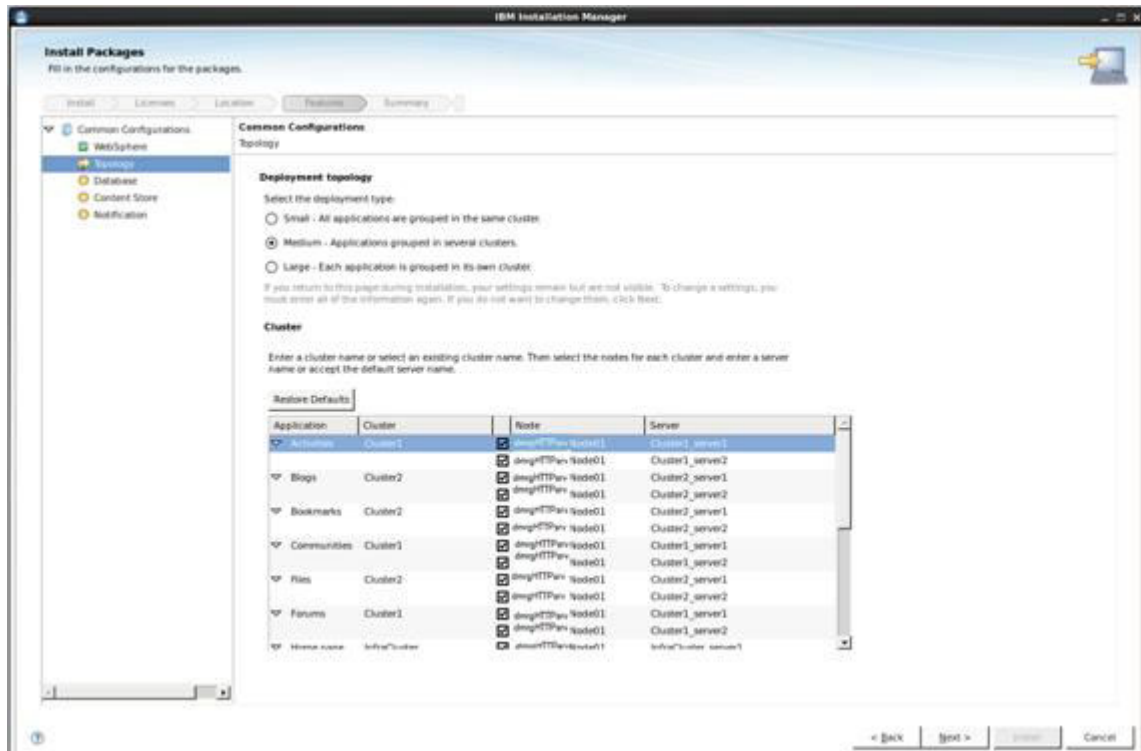


Figure 74. IBM Installation Manager - Deployment topology

13. In the database configuration page set, the options that match your environment and click **Validate** at the bottom of the page to verify their correctness. When validation successfully completes, click **OK** on the Information Dialog to close it and click **Next** to continue.

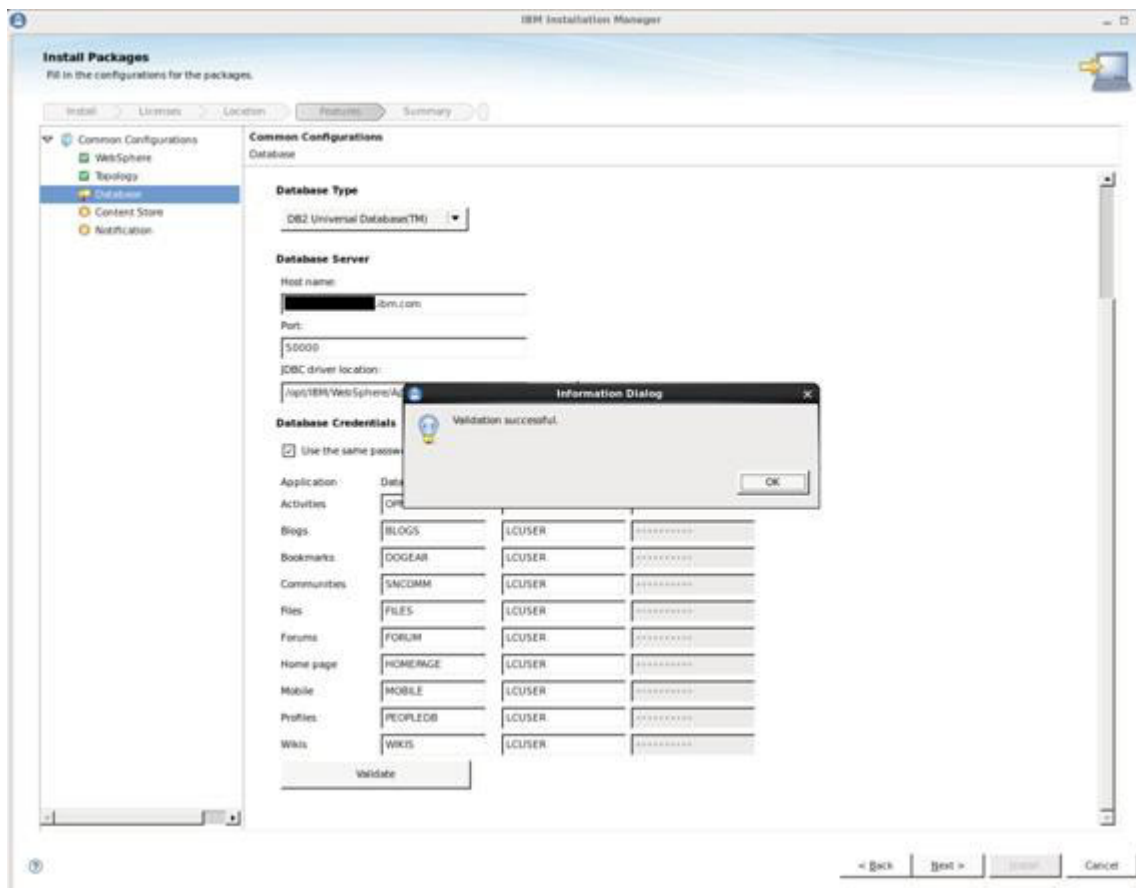


Figure 75. IBM Installation Manager - Packages configuration

14. In the Notifications configuration page, set whether notifications are sent and the correct parameters for your environment. Click **Next** to continue.

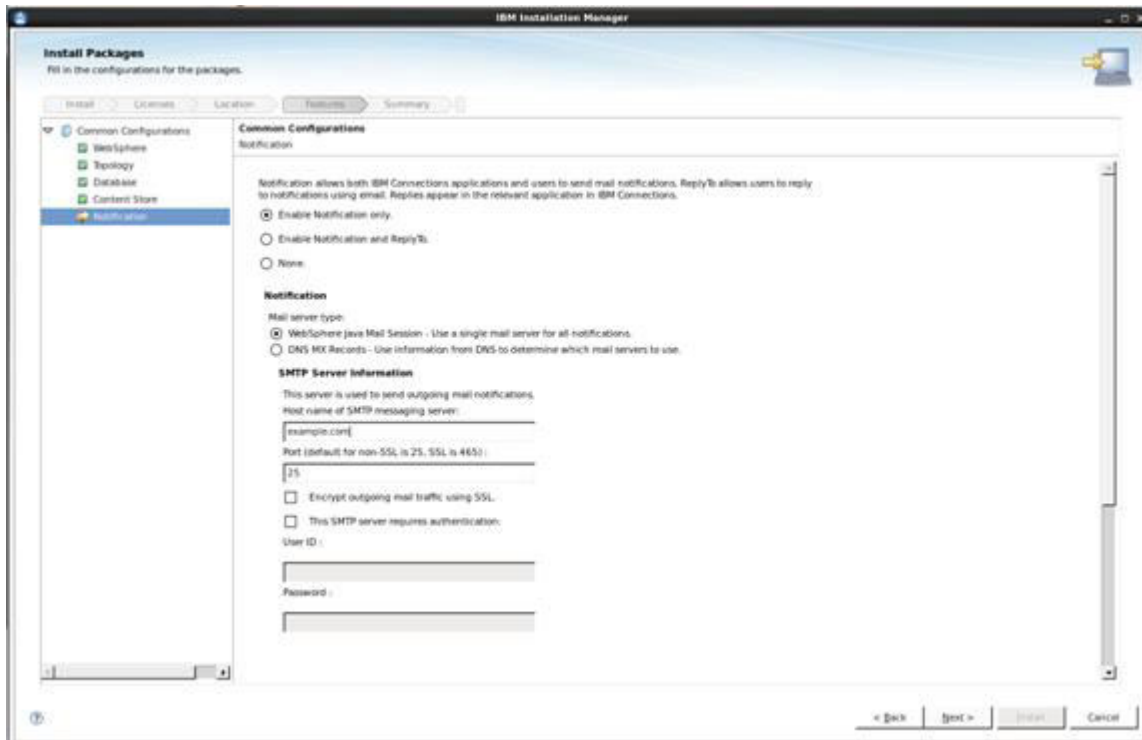


Figure 76. IBM Installation Manager - Notifications configuration

- ___ 15. The Install Package page shows the list of packages to be installed. Click **Install** to begin the installation.

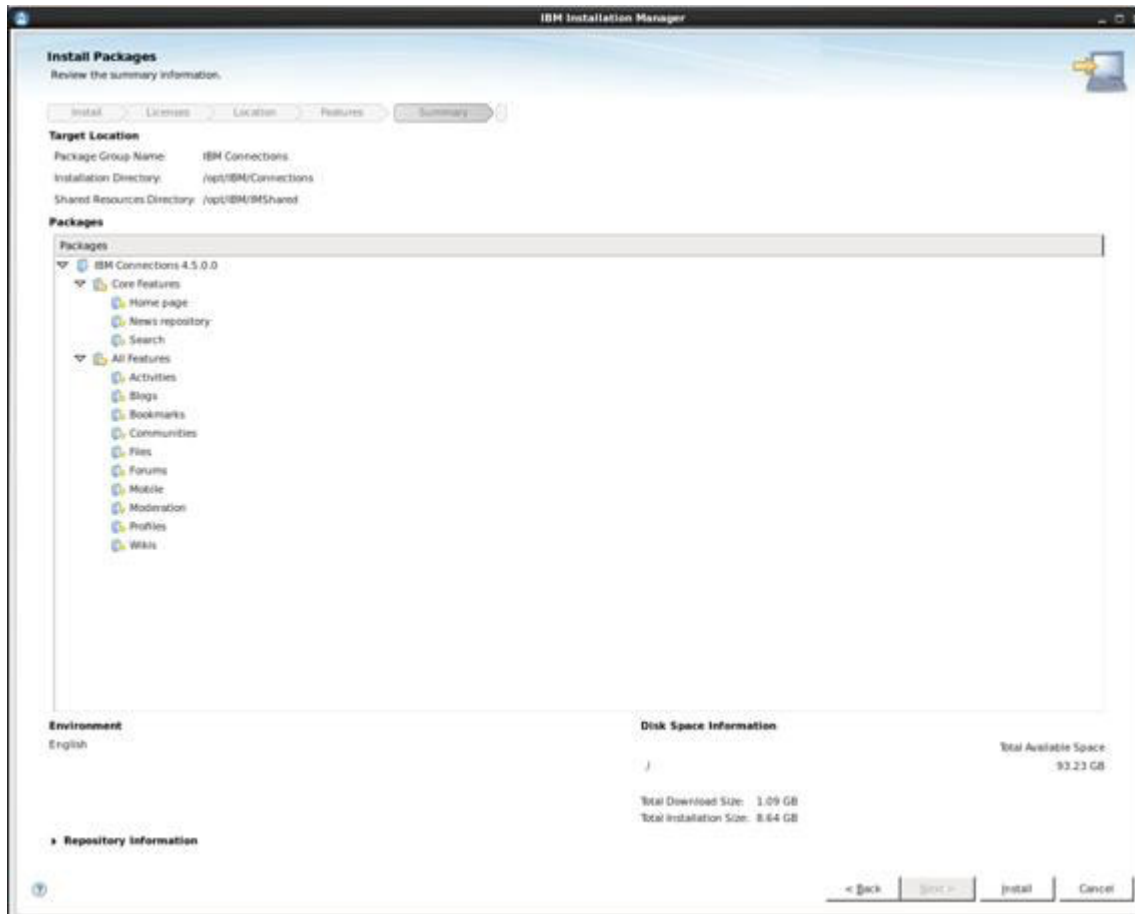


Figure 77. IBM Installation Manager - Summary information

- ___ 16. When the installation is completed, the wizard displays a report of all of the components installed. Review the information and make sure that no failure is reported. Then, click **Finish** to exit the installation wizard. The Connections installation is now complete.

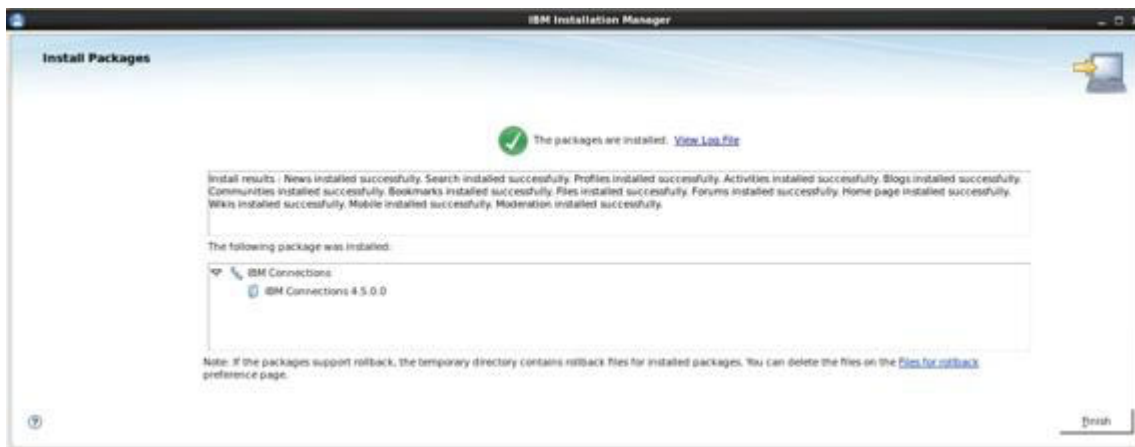


Figure 78. IBM Installation Manager - Successful packages installation

Uninstalling IBM Connections 4.5

1. Log in to the Deployment Manager host as root and start the Deployment Manager. Before proceeding, make sure that no Connections application clusters or servers are running.
2. Start the IBM Installation Manager and from the first page click **Uninstall**.



Figure 79. IBM Installation Manager

3. On the Uninstall Packages page, select the IBM Connections packages and click **Next** to continue.

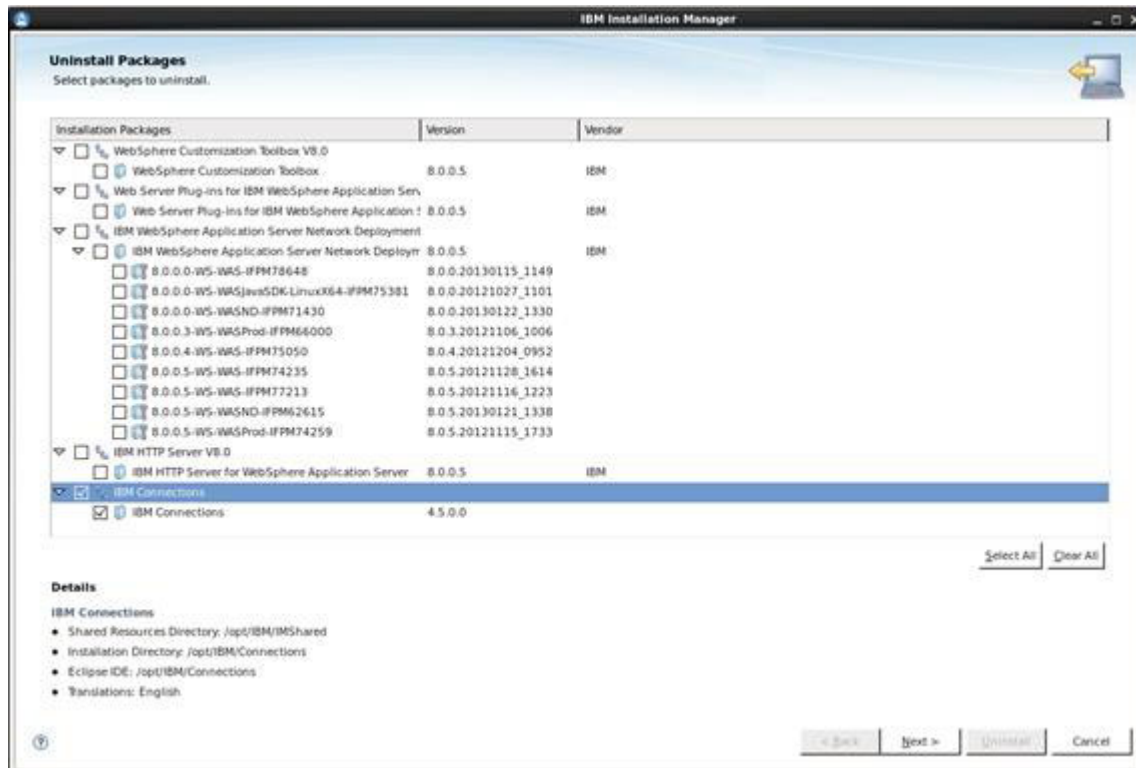


Figure 80. IBM Installation Manager - IBM Connections packages

4. On the Uninstall Package page, set the parameters for your Deployment Manager and click **Validate** to verify them. When the validation successfully completes, click **OK** on the Information Dialog to close it and click **Next** to continue.

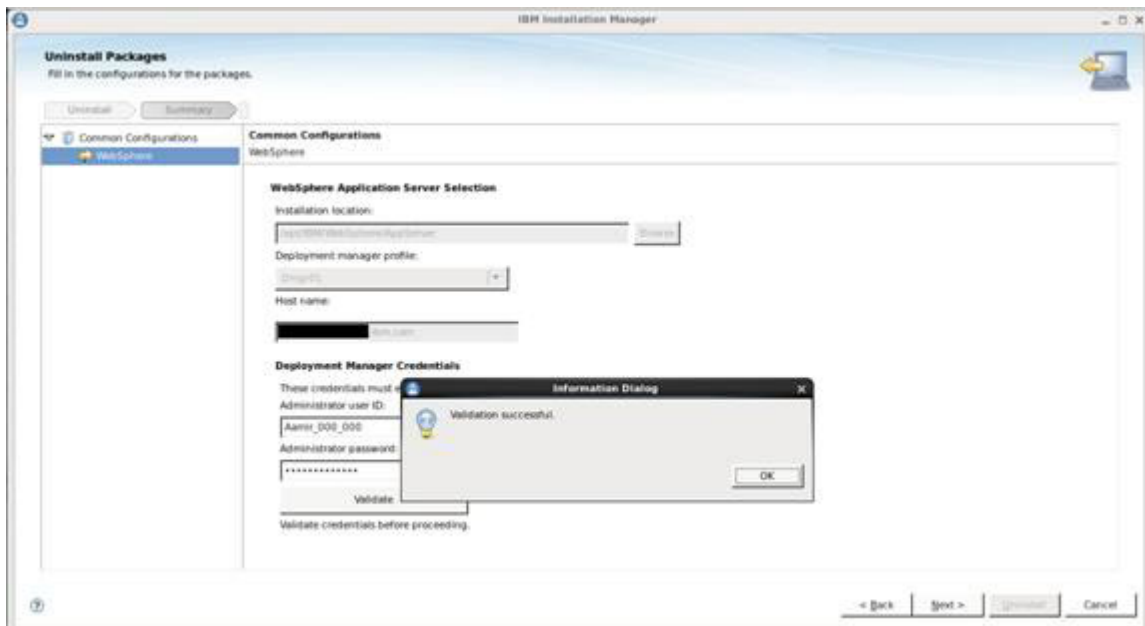


Figure 81. IBM Installation Manager - Uninstall Packages page

5. In the Uninstall Packages window verify that the packages to uninstall are correct and press **Uninstall** to begin the package removal.



Figure 82. IBM Installation Manager - Review the summary information

- ___ 6. When the uninstallation is completed, the wizard displays a report that contains all the components that are removed. Review the information and make sure that no failure is reported. Then, click **Finish** to exit the uninstall wizard. The Connections uninstallation is now complete.

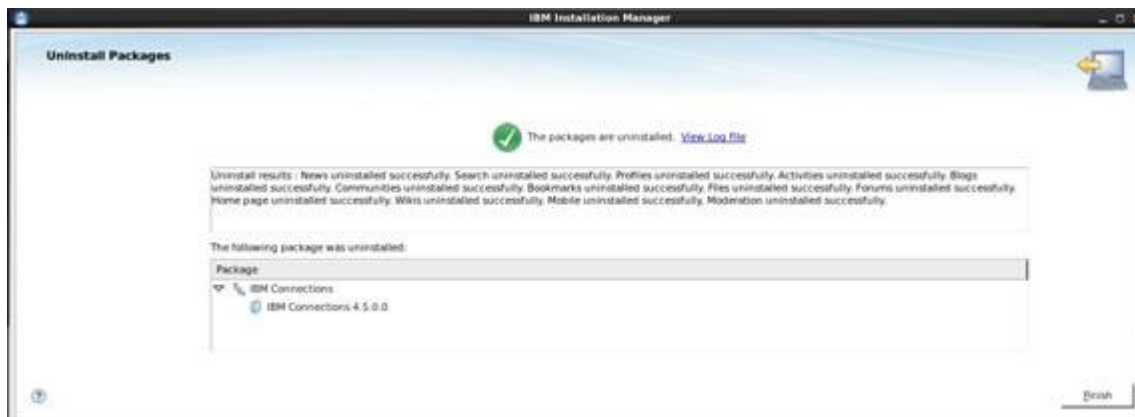


Figure 83. IBM Installation Manager - Successful Connections uninstallation