

Setting Client Location values via Policy

V1.0 Guillaume Savy g.savy@staubli.com 03.10.2010

Following an article from Mark Skurla's Blog <http://www-10.lotus.com/idd/dpblog.nsf/dx/setting-client-location-values-via-policy> about how to set customs settings by Policy, I tried to change a parameter

As English is not my native language, please fell free to correct all mistakes.

Lotus Domino 8.5 allows to set custom settings via policy

Location: Online

Basics | Servers | Ports | Mail | Internet Browser | Replicatio

Mail

Mail file location: Local

Mail file: mail

Domino mail domain: STAUBLI

Internet domain for Notes addresses when connecting directly to the Internet:

Recipient name type-ahead: Local Only

Activate recipient name type-ahead: On Each Character

Recipient name lookup: Stop after first match

Mail addressing: Local then Server

Send outgoing mail: through Domino Server

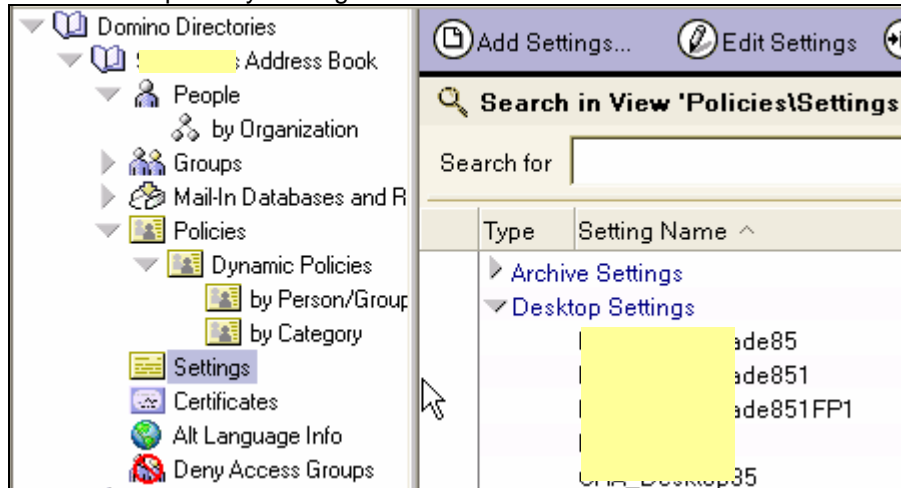
Format for messages addressed to internet addresses: MIME Format

Transfer outgoing mail if: 1 messages pending

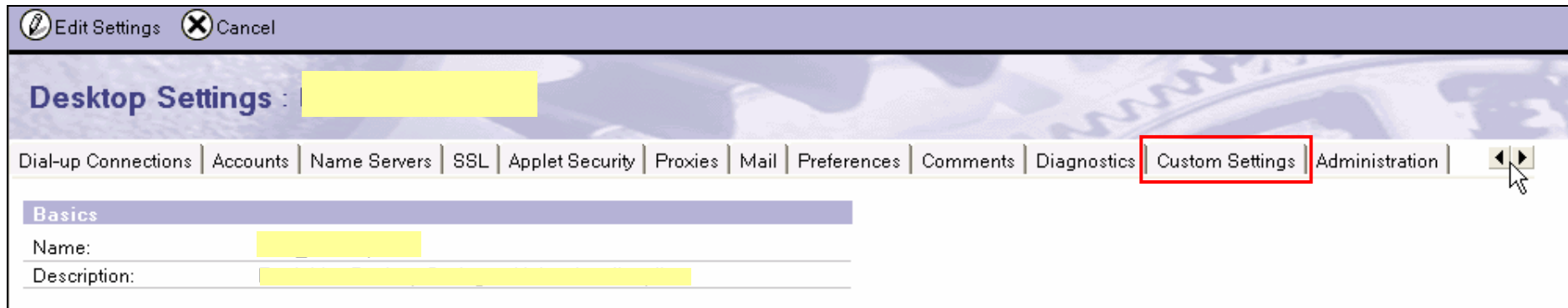
Unfortunately there is no ready made policy to set this parameter by using the desktop policy settings

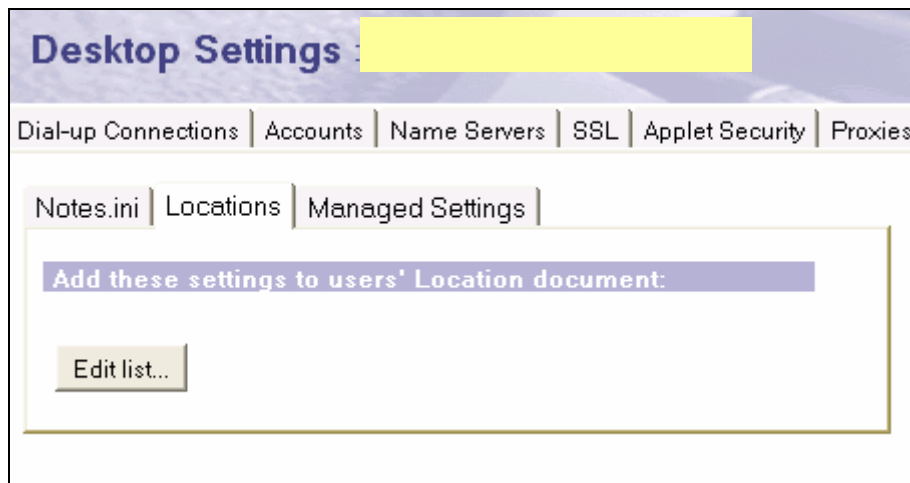
But Lotus Domino 8.5 offers the possibility to set custom settings, for those parameters.

In the Desktop Policy Settings

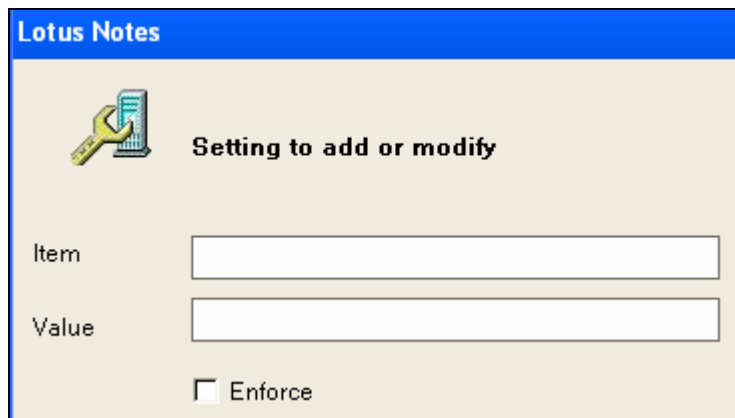


Edit the setting you want, and go to **Custom Settings**, use arrows to navigate over this tab

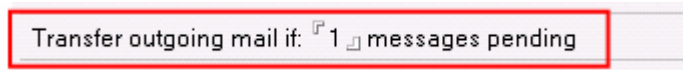




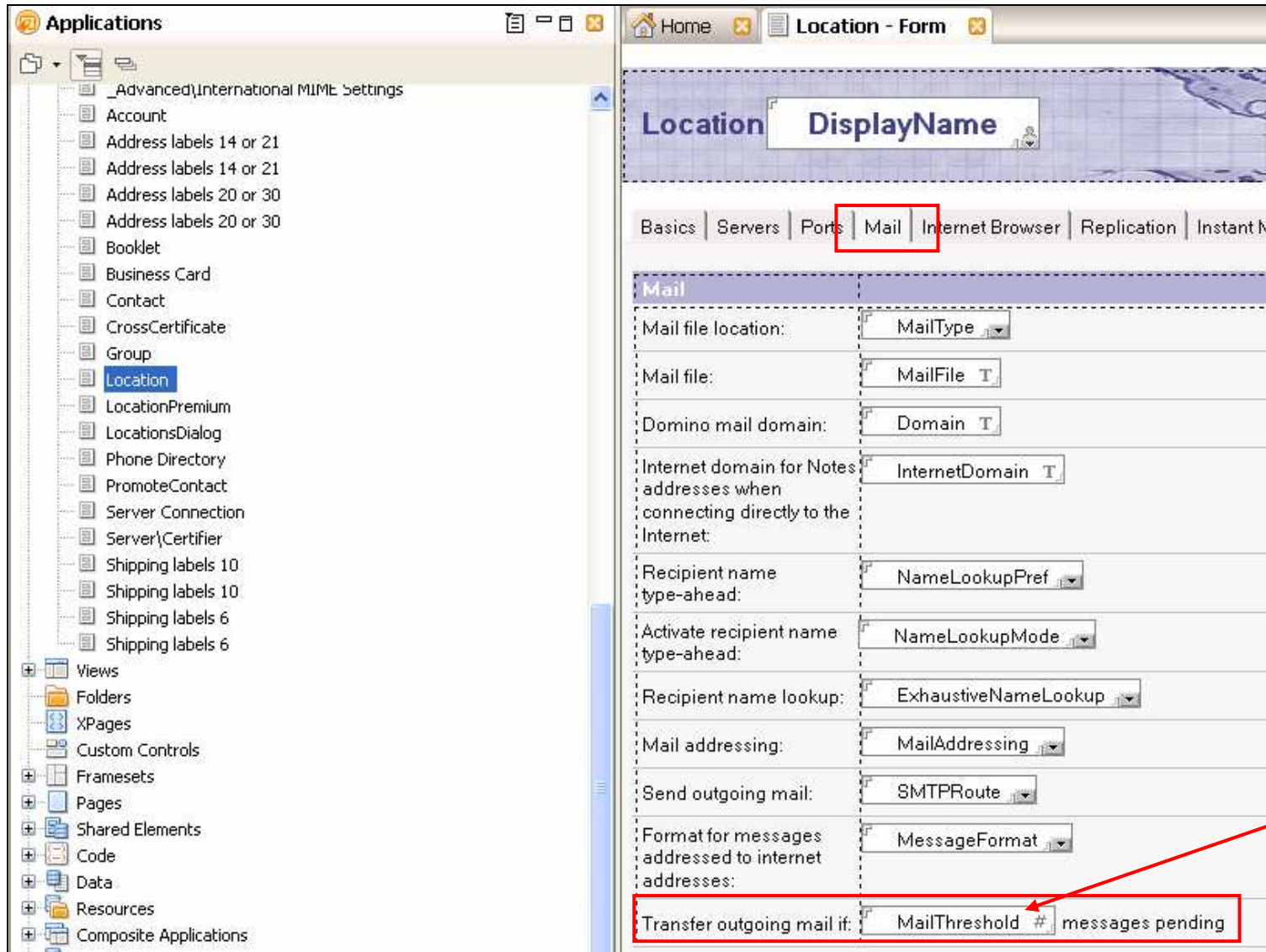
Go to **Location**, and add the **item** you want



But what is the item corresponding to **Transfer outgoing mail if** ?



For this open the local names.nsf (pernames.ntf) in Designer and find the item needed



So the requested parameter is **MailThreshold**. Then add it in the Desktop Policy with the value needed

The screenshot shows the 'Lotus Notes' Desktop Policy configuration window. On the left, under 'Setting to add or modify', there is a 'MailThreshold' icon. The 'Item' field contains 'MailThreshold' and the 'Value' field contains '1'. There is an unchecked 'Enforce' checkbox. On the right, under 'Add these Location settings to users' desktops:', there is an empty rectangular box. Below the 'Item' and 'Value' fields are three buttons: 'Add/Modify Value >>', '<< Remove', and '<< Remove all'.

The screenshot shows the 'Desktop Settings : Desktop_Default' window. The 'Locations' tab is selected. Under the heading 'Add these settings to users' Location document:', the text 'MailThreshold=1' is displayed. Below this text is an 'Edit list...' button.

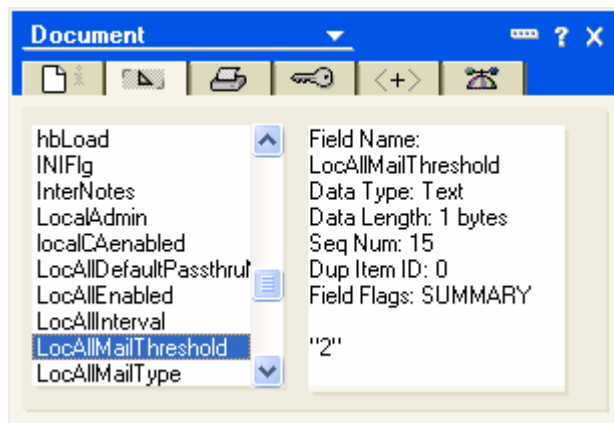
And that's all it should work now

⚠ Be aware of is a very important point. Any setting you apply via this method will affect ALL Location documents. There is currently no way to specify that only a particular location gets a particular setting. Therefore if you want your end user's to have different settings for different locations DO NOT use this method

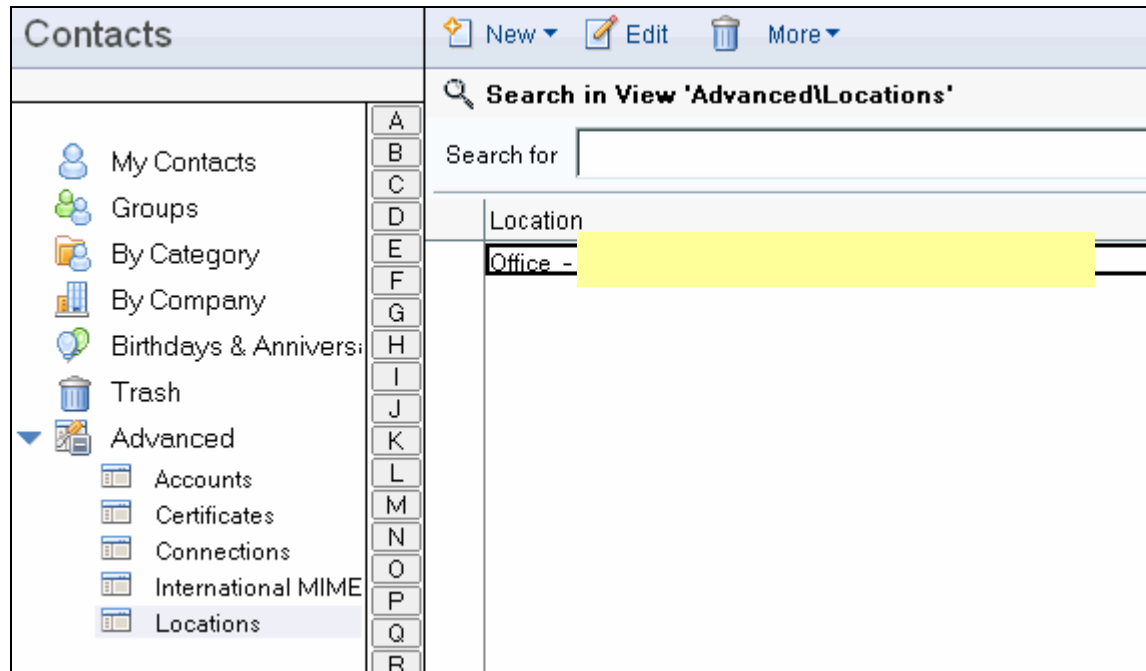
Troubleshooting

On Domino Server, check the policy Document Properties, you should find the setting you added

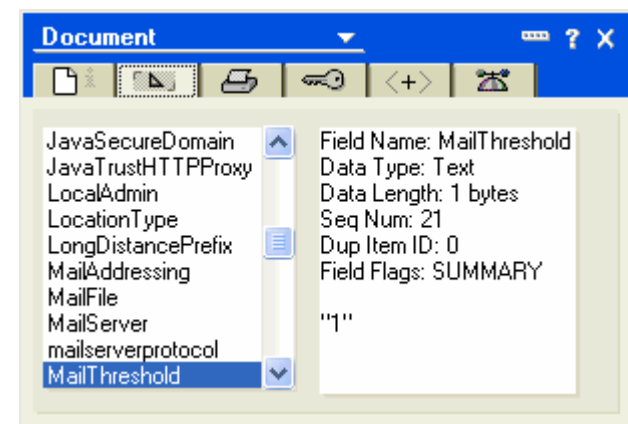
The name is the same with **LocAll** before.



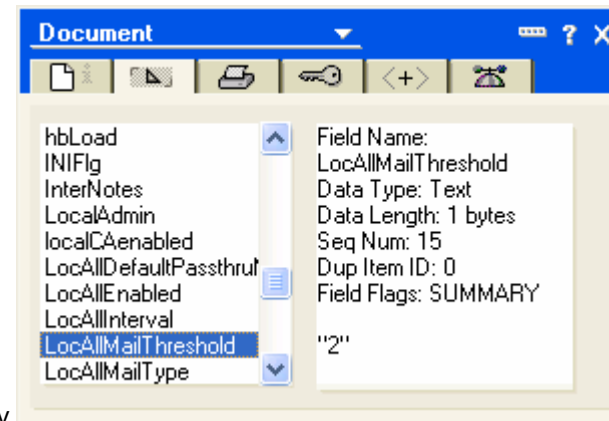
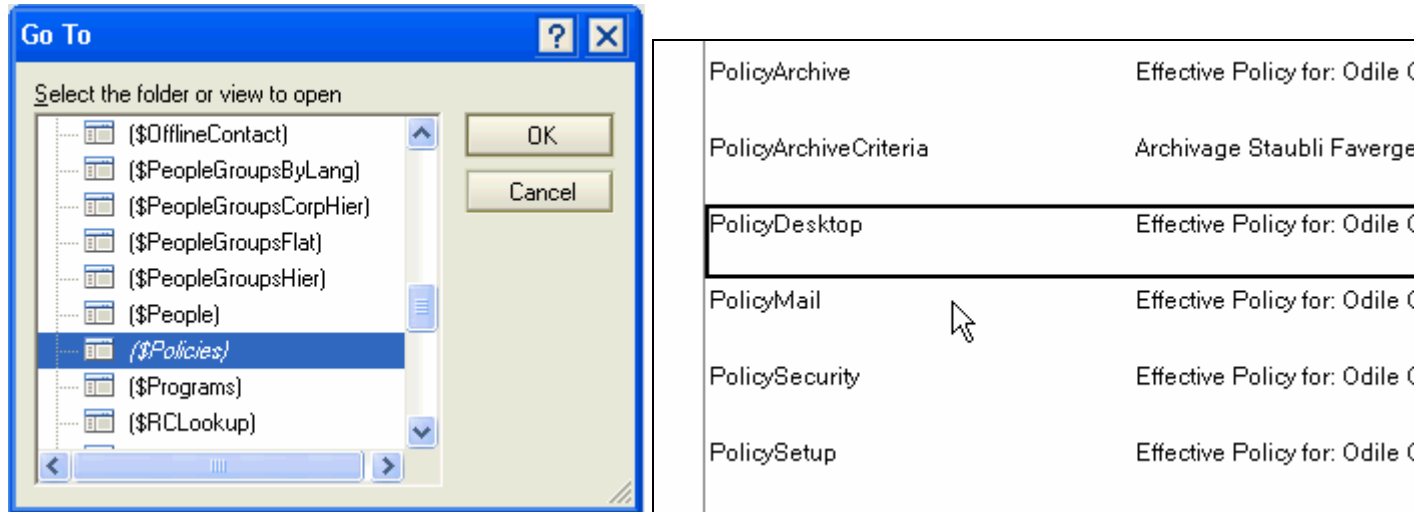
On client side, check the setting is received by policy mechanism.



Open the location document properties, you must see the **MailThreshold** parameter here, it means it has been set by the policy



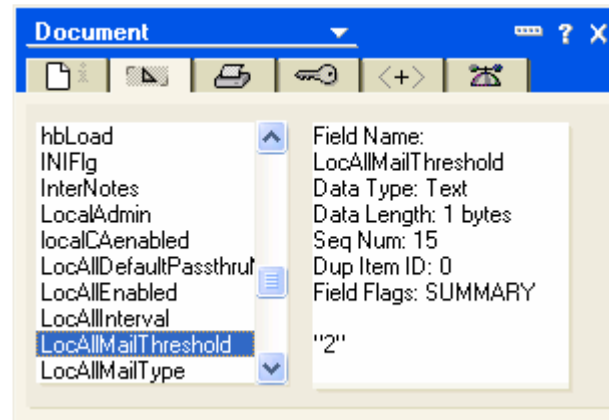
if you don't have it, open the view \$Policies (view GoTo + Ctrl Shift) and check **PolicyDesktop** document properties



You should find the same **LocAllMailThreshold** item coming from the Desktop Policy

Removing the settings

When you remove the settings from the policy itself, the setting will still apply because it is still in the document policy itself; you have to create an agent to remove it.



Properties of Policy setting Document

How to create and agent

Open the address book in Designer, go to **Agents** and create a new agent with the following Formula

```
Run Client Formula
FIELD LocAllMailThreshold:=@DeleteField;
SELECT @All
```