

Welcome to IBM® Lotus® Notes® Traveler 8.5.2

A new version of **IBM Lotus Notes Traveler 8.5.2** is coming to your mobile device. Take a look at what's in store!

What's new...

<p><i>...for all supported devices</i></p>	<p>User managed security With user managed security, users can now remotely wipe or lock their own devices, without the help of an administrator. They can also clear their own actions. For example, they can cancel wipe requests and re-enable server access for a device that was previously locked.</p> <p>To perform these actions, open the Lotus Notes Traveler User Home Page from your device and select the Manage Security section.</p>
<p><i>..for Apple devices</i></p>	<p>Support for Meeting Invitations on Apple devices Invitation notices can now be processed on Apple devices. Users invited to meetings can accept, tentatively accept or decline meeting notices right from their mobile device. Support is also included for users to create meetings on the device with attendees, and to reschedule, update or cancel meetings from the Apple device.</p> <p>To respond to a meeting invitation using Lotus Notes Traveler:</p> <ol style="list-style-type: none">1. In your Inbox, open the meeting invitation. Press the Invitation icon within the email's Body.2. Optionally, press Add Comments to include remarks in the reply.3. Select either Accept, Maybe or Decline.
<p><i>...for Nokia and Windows Mobile devices</i></p>	<p>Corporate Name Lookup You can now search for users in your corporate directory and display information such as phone numbers and e-mail addresses.</p> <p>To search for a contact using corporate look up:</p> <ol style="list-style-type: none">1. Start the Traveler Lookup application.2. Enter the first few characters of the contact's first or last name. The Results window populates a list of names with similar characters.3. Select the appropriate name from the list.4. Once the contact displays, you can call, e-mail or add the contact to your local contacts list. <p>You can also search your corporate directory while composing a new email and add recipients directly to your new mail message address fields.</p> <p>Scheduled Synchronization Lotus Notes Traveler users on Windows Mobile and Nokia S60 devices can now define a synchronization schedule for peak and off peak times. On the device, open the Lotus Notes Traveler client application, then access the Settings display. Select the settings for Auto Sync, and then select Schedule. You can set the behavior for two time periods; a peak time</p>

schedule and an off peak schedule. The sync behavior can be any of the following:

- Always Connected
- Manual
- Every 15 minutes
- Every 30 minutes
- Every hour
- Every 2 hours

Automatic Lotus Notes Traveler client updates

A new installer application called Lotus Mobile Installer now helps you to install the Lotus Notes Traveler client software. It can also be configured to periodically check with the server for any updates to the client software. If updates are detected, the device user is prompted to download and install the latest updates.

To get the Lotus Mobile Installer application:

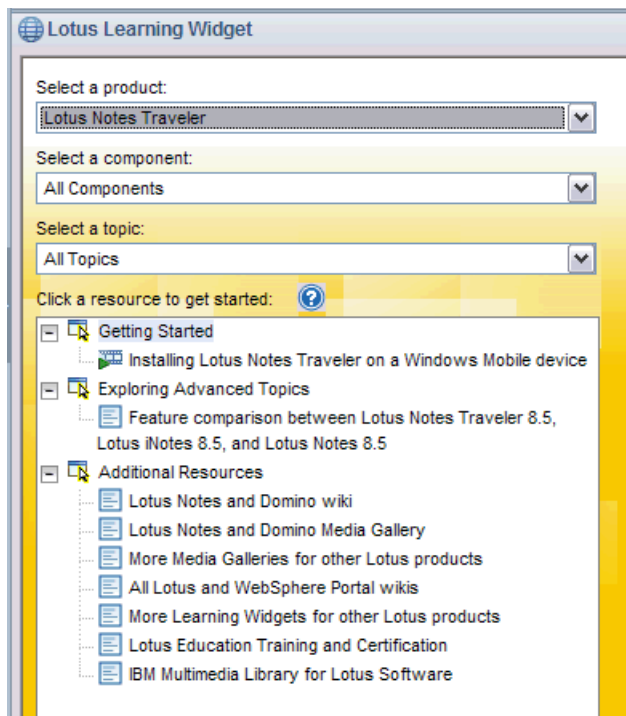
1. Turn on your mobile device.
2. Launch the device's browser.
3. Go to the Lotus Notes Traveler user home page..
4. Select **Download Lotus Mobile Installer**. Transfer the file to your mobile device and open the file.
5. When the installation is complete, the Lotus Mobile Installer starts.

Learn more

REMEMBER TO UPDATE LINKS

Resource	Description
Help links and locations	You can view IBM® Lotus® Notes® Traveler help in the IBM Lotus Notes and Domino wiki .
Learning Plug-in	Install the Learning Plug-in to access show-me demos, tutorials, product tours, and more, directly from your sidebar. (See the screen image below)
Media Gallery	The Media Gallery provides links to a variety of information including Flash demonstrations, videos, reference cards, Web seminars, product tours, and other materials for learning more about Lotus Notes.
View a demonstration of setting up Lotus Notes Traveler on an Apple devices	Watch the demonstration here .
New Features	To view a complete list of new features, see the topic What's New in Lotus Notes Traveler 8.5.2 in the Lotus Notes and Domino Wiki.

IBM Lotus Notes Traveler Learning Plug-in



Getting help

Use the following resources to get more assistance:

Resource	Description
Help desk	Phone number
Internal wiki/blog	URL
Help links and locations	You can view IBM® Lotus® Notes® Traveler help by visiting the IBM Lotus Domino and Notes Information Center .
Submit feedback	Let us know if this guide was helpful to you or provide comments on our Help topics. Click the Submit Feedback button or link in your product Help.

IBM, the IBM logo, and ibm.com are trademarks or registered trademarks of International Business Machines Corp., registered in many jurisdictions worldwide. Other product and service names might be trademarks of IBM or other companies. A current list of IBM trademarks is available on the Web at "[Copyright and trademark information](#)" at www.ibm.com/legal/copytrade.shtml.

- **Remove copyright statement from completed template (ODT file) delivered to administrators.**