

Welcome to IBM® Lotus® Notes® Traveler 8.5.3

A new version of **IBM Lotus Notes Traveler 8.5.3** is coming to your mobile device. Take a look at what's in store!

What's new...

<p><i>...for Android devices</i></p>	<p>Installation improvements Lotus® Mobile Installer is no longer a separate application. The features provided by Lotus Mobile Installer, such as automatic client updates, have been consolidated within the Lotus Notes Traveler client application.</p> <p>Mail enhancements The user interface in the compose mail editor has been improved. Send, Save as Draft and Discard actions are now available directly from the primary compose screen instead of the context menu.</p> <p>Calendar enhancements You can now schedule, reschedule, modify or cancel meetings with attendees from your Android device.</p>
<p><i>...for Apple devices</i></p>	<p>Mail enhancements You can now flag mail for follow up purposes. Flags can be set on both the server and device side, and will sync both ways.</p> <p>Folder management Previously, folder management functions were only available on the server side. Now, you can create, rename, move, and delete mail folders from your Apple device.</p>
<p><i>...for Nokia devices</i></p>	<p>Nokia Symbian^3 support Lotus Notes Traveler client is now available for Symbian^3 devices in addition to S60 3rd and 5th edition devices.</p>
<p><i>...for Lotus Notes Traveler server</i></p>	<p>Device level access control for new devices A new security policy option called Device Access is now available with Lotus Notes Traveler. This policy is disabled by default, but administrators can use it to require approval for new devices registering on the Lotus Notes Traveler server. See the Device Access tab on the default settings document.</p> <p>Mail routing configuration Previous versions of the Lotus Notes Traveler server required that mail routing was configured and working in order for the server to process SMS push messages and meeting notices originating from the mobile device. In deployment scenarios where the Lotus Notes Traveler server is not running on the same Domino server as mail services, this is no longer required. The Lotus Notes Traveler server now uses the user's mail server's mail.box for all outgoing messages.</p> <p>Meeting notices sent from mobile devices Previously, meeting notices, such as new meeting requests from the device or meeting acceptance notices, had their "Sent By" field as the Lotus Notes</p>

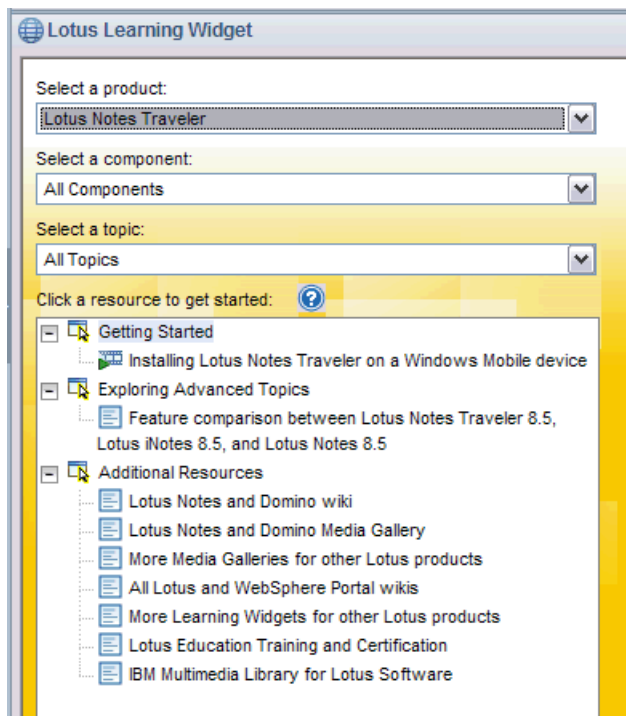
	<p>Traveler server address. This has been fixed so that calendar notices are now processed in a similar path to outgoing email and the notices now all originate from the mobile device user's identity.</p>
--	--

Learn more

REMEMBER TO UPDATE LINKS

Resource	Description
Help links and locations	You can view IBM® Lotus® Notes® Traveler help in the IBM Lotus Notes and Domino wiki .
Learning Plug-in	Install the Learning Plug-in to access show-me demos, tutorials, product tours, and more, directly from your sidebar. (See the screen image below)
Media Gallery	The Media Gallery provides links to a variety of information including Flash demonstrations, videos, reference cards, Web seminars, product tours, and other materials for learning more about Lotus Notes.
View a demonstration of setting up Lotus Notes Traveler on an Apple devices	Watch the demonstration here .
New Features	To view a complete list of new features, see the topic What's New in Lotus Notes Traveler 8.5.2 in the Lotus Notes and Domino Wiki.

IBM Lotus Notes Traveler Learning Plug-in



Getting help

Use the following resources to get more assistance:

Resource	Description
Help desk	<i>Put your company-specific instructions here:</i> Phone number
Internal wiki/blog	<i>Put your company-specific instructions here:</i> URL
Help links and locations	You can view IBM® Lotus® Notes® Traveler help by visiting the IBM Lotus Domino and Notes Information Center .
Submit feedback	Let us know if this guide was helpful to you or provide comments on our Help topics. Click the Submit Feedback button or link in your product Help.

- *To add more rows click Table > Row > Insert.*
- *Choose File > Export to create a PDF of your preview guide.*

IBM, the IBM logo, and ibm.com are trademarks or registered trademarks of International Business Machines Corp., registered in many jurisdictions worldwide. Other product and service names might be trademarks of IBM or other companies. A current list of IBM trademarks is available on the Web at "[Copyright and trademark information](#)" at www.ibm.com/legal/copytrade.shtml.

- *Remove copyright statement from completed template (ODT file) delivered to administrators.*